

# Product data sheet

## E 1500 S



Spindle drive with high opening and closing speed

### AREAS OF APPLICATION

- Heavy windows in the roof area
- Natural ventilation, smoke and heat extraction system, natural smoke and heat extraction device (SHEV)
- Use in the exhaust air system
- Installation on wooden, PVC or metal windows



### PRODUCT FEATURES

- High pressure force and high speed
- Max. opening width of 1000 mm achieved in less than 60 seconds
- Robust and corrosion-resistant design with built-in end position damping
- Syncro drive sets are available for leaf widths over 1200 mm
- Aluminium housing for highest design demands
- Extensive brackets allow versatile installation on main or secondary closing edges
- Syncro set without external control unit
- Tested as a natural smoke and heat exhaust ventilation device (SHEV) in accordance with EN 12101-2

### TECHNICAL DATA

|                                      |                   |
|--------------------------------------|-------------------|
| Productname                          | E 1500 S          |
| Dimensions                           | 50 x 50 mm        |
| Opening speed RWA                    | 16 mm/s           |
| Opening speed ventilation            | 16 mm/s           |
| Closing speed (max.)                 | 16 mm/s           |
| Force of pressure (max.)             | 1500 N            |
| Holding force (max.)                 | 25000 N           |
| Compressive force                    | 1500 N            |
| Tensile force                        | 1500 N            |
| Voltage at operation                 | 24 V ± 25 %       |
| Operating voltage                    | 24 V DC           |
| Current consumption                  | 4 A               |
| Power consumption                    | 72 W              |
| Residual ripple                      | 20 %              |
| Duty rating                          | 30 %              |
| Connector cable length               | 3 m               |
| Special length of connector cable    | 5 m, 10 m         |
| Min. core cross section              | 1 mm <sup>2</sup> |
| Number of cores                      | 3 cores           |
| Service temperature                  | -5 - 75 °C        |
| IP rating                            | IP54              |
| protection rating                    | III               |
| Syncro function                      | Yes               |
| Type of additional locking mechanism | Locking drive     |
| Type of stroke shortening            | Factory setting   |
| End position cut-off extended        | electronic        |
| End position cut-off retracted       | electronic        |
| Overload cut-off                     | Yes               |

|                                    |                           |
|------------------------------------|---------------------------|
| Complete opening within 60 s       | yes, up to 1000 mm stroke |
| SHEV tested                        | Yes                       |
| SHEV additional information        | yes, up to 1000 mm stroke |
| Number synchronisation drive units | 4                         |
| KNX ability                        | No                        |
| OUTWARD-opening roof window        | Yes                       |

**VARIANTS / ORDER INFO**

| Designation                     | Description  | Ident-No. | Colour           | Stroke  | Dimensions        |
|---------------------------------|--|-----------|------------------|---------|-------------------|
| E 1500 S                        | Can be configured: Stroke, cable length, colour              | 162384    | according to RAL |         | 50 x 50 mm        |
| E 1500 S Syncro                 | Consisting of two drives with integrated Syncro control unit | 162385    | EV1              | 500 mm  | 965 x 50 x 50 mm  |
| E 1500 S Syncro                 | Consisting of two drives with integrated Syncro control unit | 162387    | EV1              | 1000 mm | 1465 x 50 x 50 mm |
| E 1500 S Syncro special version | Can be configured: Stroke, cable length, colour, Syncro 2-4  | 162388    | according to RAL |         | 50 x 50 mm        |
| E 1500 S                        |  | 162382    | EV1              | 750 mm  | 1215 x 50 x 50 mm |
| E 1500 S Syncro                 | Consisting of two drives with integrated Syncro control unit | 162386    | EV1              | 750 mm  | 1215 x 50 x 50 mm |
| E 1500 S                        |  | 162381    | EV1              | 500 mm  | 965 x 50 x 50 mm  |
| E 1500 S                        |  | 162383    | EV1              | 1000 mm | 1465 x 50 x 50 mm |

**ACCESSORIES****ROOF WINDOW BRACKET E 3000 \***

For installation of the E 1500 S and E 3000 spindle drives



| Designation                | Ident-No. | Colour           |
|----------------------------|-----------|------------------|
| Roof window bracket E 3000 | 121292    | according to RAL |
| Roof window bracket E 3000 | 121291    | white RAL 9016   |
| Roof window bracket E 3000 | 121280    | silver-coloured  |

**BRACKET MOUNT E 3000 NSK AP \***

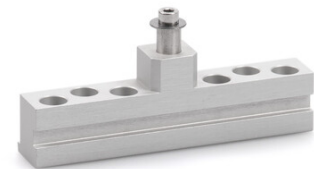
For roof window installation of the E 1500 S and E 3000 spindle drives



| Designation                      | Description   | Ident-No. | Colour          |
|----------------------------------|---|-----------|-----------------|
| Bracket mount E 3000 NSK AP<br>* | suitable for installation on the secondary closing edge of roof windows | 140714    | silver-coloured |

**LEAF BRACKET E 3000 NSK HE \***

For roof window installation of the E 1500 S and E 3000 spindle drives



| Designation                     | Description   | Ident-No. | Colour |
|---------------------------------|---|-----------|--------|
| Leaf bracket E 3000 NSK HE<br>* | suitable for installation on the secondary closing edge of roof windows (Heroal 85 D) | 136206    | EV1    |

**CONICAL SLEEVE E 3000**

For installation of the E 1500 S and E 3000 spindle drives



| Designation           | Description                             | Ident-No. | Colour           |
|-----------------------|---|-----------|------------------|
| Conical sleeve E 3000 | for installation of E 1500 S and E 3000 | 121275    | white RAL 9016   |
| Conical sleeve E 3000 | for installation of E 1500 S and E 3000 | 121276    | according to RAL |
| Conical sleeve E 3000 | for installation of E 1500 S and E 3000 | 121274    | silver-coloured  |

**LEAF BRACKET E 1500/ E 3000 NSK AP \***

For installation of the E 1500 N, E 1500 S, E 3000 and E 250 NT spindle drives

**LEAF BRACKET E 3000 \***

For installation of the E 1500 S and E 3000 spindle drives



| Designation           | Ident-No. | Colour           |
|-----------------------|-----------|------------------|
| Leaf bracket E 3000 * | 121277    | silver-coloured  |
| Leaf bracket E 3000 * | 121279    | according to RAL |
| Leaf bracket E 3000 * | 121278    | white RAL 9016   |

**LEAF BRACKET E 3000 HSK HE \***

For installation of the E 1500 S and E 3000 spindle drives



| Designation                  | Description   | Ident-No. | Colour |
|------------------------------|---|-----------|--------|
| Leaf bracket E 3000 HSK HE * | suitable for installation on the main closing edge of roof windows (Heroal 085 D) | 136207    | EV1    |

**LEAF BRACKET E 3000 NSK A-HU \***

For installation of the E 1500 S and E 3000 spindle drives



| Designation                  | Description  | Ident-No. | Colour |
|------------------------------|--|-----------|--------|
| Leaf bracket E 3000 NSK A-HU | suitable for installation on the secondary closing edge of roof windows (Alcoa AA 100, Hueck VF 50/60) | 136205    | EV1    |

**LEAF BRACKET E 3000 NSK W-HU \***

For installation of the E 1500 S and E 3000 spindle drives



| Designation                    | Description   | Ident-No. | Colour |
|--------------------------------|---|-----------|--------|
| Leaf bracket E 3000 NSK W-HU * | suitable for installation on the secondary closing edge of roof windows (Wicona WT 50/60, Hueck 85 E) | 136204    | EV1    |

**BRACKET E 3000 NSK \***

For roof window installation of the E 1500 S and E 3000 spindle drives



| Designation          | Description  | Ident-No. | Colour          |
|----------------------|--|-----------|-----------------|
| Bracket E 3000 NSK * | suitable for installation on the secondary closing edge of roof windows. Supplied by GEZE without conical sleeve ID no. 121274 | 130525    | silver-coloured |

**BRACKET E 3000 NSK S \***

For roof window installation of the E 1500 S and E 3000 spindle drives



| Designation            | Description  | Ident-No. | Colour          |
|------------------------|--|-----------|-----------------|
| Bracket E 3000 NSK S * | suitable for installation on the secondary closing edge of roof windows (Schüco AWS57 RO). Supplied by GEZE without conical sleeve ID no. 121274 | 136183    | silver-coloured |

# E 1500 S



## BRACKET MOUNT E 3000 HSK

For roof window installation of the E 1500 S and E 3000 spindle drives



| Designation              | Description  | Ident-No. | Colour          |
|--------------------------|--|-----------|-----------------|
| Bracket mount E 3000 HSK | suitable for installation on the main closing edge of roof windows | 136202    | silver-coloured |

## BRACKET MOUNT E 3000 NSK \*

For roof window installation of the E 1500 S and E 3000 spindle drives



| Designation                | Description   | Ident-No. | Colour          |
|----------------------------|---|-----------|-----------------|
| Bracket mount E 3000 NSK * | suitable for installation on the secondary closing edge of roof windows | 136203    | silver-coloured |

## POWER SUPPLY NT 6.25 A-24 V HS \*

24 V power supply for top hat rail mounting



| Designation                      | Description  | Ident-No. | Colour | Dimensions        | Operating voltage |
|----------------------------------|--|-----------|--------|-------------------|-------------------|
| Power supply NT 6.25 A-24 V HS * | Output voltage 24 V DC<br>W x H x D: 72 x 95 x 66.5 mm<br>Installation on top hat rail, 4 horizontal pitches | 192113    | grey   | 72 x 95 x 66.5 mm | 230 V DC +/- 10%  |

## OPEN/CLOSE WINDOW CONTROL \*

Open/Close window controller for simple ventilation control



| Designation   | Description   | Ident-No. | Dimensions        | Operating voltage | Type of installation       |
|---|---|-----------|-------------------|-------------------|----------------------------|
| OPEN/CLOSE window control unit 24 V - HS *                    | Control unit (individual, group, central, time) for 24 V window drives for installation on a top hat rail. Output current max. 8 A                              | 163812    | 18 x 88 x 58 mm   | 24 V              | Top hat rail mounting      |
| OPEN/CLOSE window control unit 24 V - UP *                    | Control unit (individual, group, central, time) for 24 V window drives for installation in a flush-mounted box. Output current max. 8 A                         | 163813    | 43 x 43 x 18.5 mm | 24 V              | Flush-mounted installation |
| OPEN/CLOSE window control unit 230 V - HS *                   | Control unit (individual, group, central, time) for 230 V window drives for installation on a top hat rail. Output current max. 10 A                            | 163814    | 18 x 88 x 58 mm   | 230 V             | Top hat rail mounting      |
| OPEN/CLOSE window control unit 230 V - UP *                   | Control unit (individual, group, central, time) for 230 V window drives for installation in a flush-mounted box. Output current max. 10 A                       | 163815    | 43 x 43 x 18.5 mm | 230 V             | Flush-mounted installation |
| OPEN/CLOSE universal window control 230 V AC - TOP HAT RAIL * | Control unit (individual, group, central, time) with potential-free inputs for 230 V window drives for installation on a top hat rail. Output current max. 10 A | 163816    | 18 x 88 x 58 mm   | 230 V             | Top hat rail mounting      |

## LEAF BRACKET E 1500/ E 3000 NSK S \*

For installation of the E 1500 N, E 1500 S, E 3000 and E 250 NT spindle drives



| Designation                         | Description   | Ident-No. | Colour |
|-------------------------------------|---|-----------|--------|
| Leaf bracket E 1500/ E 3000 NSK S * | suitable for installation on the secondary closing edge of roof windows (Schüco AWS57 RO) | 136186    | EV1    |



**SERVICE CASE IQ WINDOWDRIVE**

For commissioning and parameter setting of the window drives from the IQ windowdrive range



| Designation                      | Description   | Ident-No. | Colour          | Supply voltage | Output current (max.) |
|----------------------------------|---|-----------|-----------------|----------------|-----------------------|
| Service case GEZE IQ windowdrive | for commissioning of 24 V window drives and for parameter setting of the IQ windowdrive drives in combination with the ST 220 | 142586    | silver-coloured | 100 - 240 V AC | 5.5 A                 |

**SURFACE-MOUNTED HOUSING \***

Housing for surface mounting of top hat rail components such as power supply units or control units



| Designation               | Description  | Ident-No. | Colour | Dimensions        | IP rating |
|---------------------------|--|-----------|--------|-------------------|-----------|
| Surface-mounted housing * | Size: W x H x D = 193 x 130 x 82 mm. For electronic top hat rail components, e.g. power supply units | 152010    | white  | 193 x 130 x 82 mm | IP40      |

\* The products designated above may vary in form, type, characteristics, function, or availability depending on the country. Please get in touch with your GEZE contact person if you have any questions.