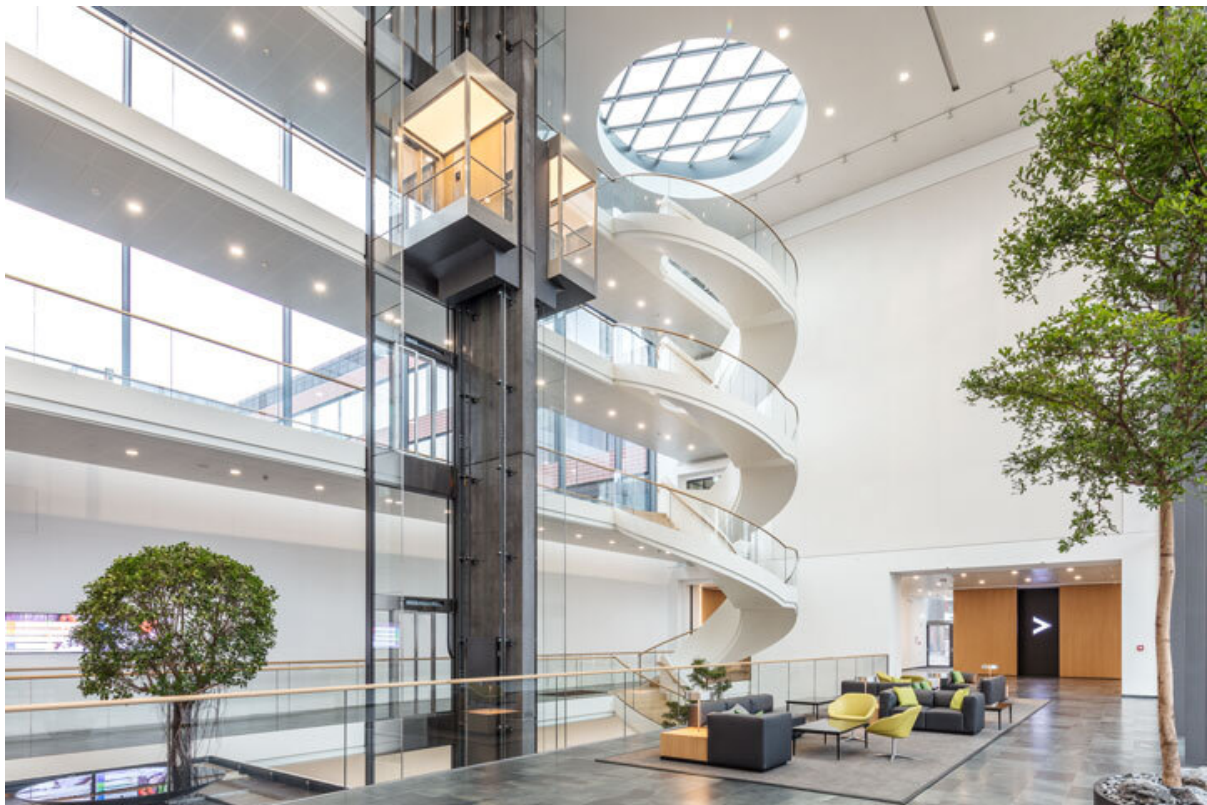


Product data sheet

Slimdrive SC *



Automatic curved sliding door system for the realization of semi curved solutions and vestibule systems

AREAS OF APPLICATION

- Single and double leaf door systems
- Interior and exterior doors with high access frequency
- Representative building entrances with large incidence of light
- Façades with slim mullion-transom constructions
- Glass façades with the highest design standards
- Vestibule systems, in combination with linear sliding doors
- Opening widths of 800 to 3000 mm possible
- Door leaf weights up to maximally 120 kg
- Suitable profile systems are fine-framed profile systems with ISO and mono glass and all-glass systems (GGS)

PRODUCT FEATURES

- Very quiet running, low-wear direct current drive with a height of only 7 cm
- 40 % more opening width than with linear sliding door drives
- Various drive variants possible, e.g. double entrance, corner door, arc, semicircle
- Can be networked, and integrated into the building automation via open standard (BACnet)
- Independent error recognition and recording
- Freely configurable inputs and outputs for different functions
- Integrated, rechargeable battery for emergency opening in case of safety-relevant faults, such as power failure
- Self-cleaning roller carriage reduces maintenance effort and costs
- Various mechanical and electrical locks are optionally available

TECHNICAL DATA

Productname	Slimdrive SC *
Barrier-free	Yes
Adjustable opening speed (ventilation)	Yes
Adjustable closing speed	Yes
Opening width 2-leaf	800 mm - 3000 mm
Clear passage height	3000 mm
Canopy height (min.)	75 mm
Leaf weight (max.) 1-leaf	120 kg
Leaf weight (max.) 2-leaf	120 kg
Radius (min.)	1000 mm
Moving leaf version	10 mm LSG, Special glass on request

Side elements version	10 mm LSG, 22 mm panel lining, Special glass on request
Surface	Powder-coated according to RAL, Anodised light alloy E6/EV1, colour anodised according to sample, Coated with polished stainless steel, coated with grit 240 stainless steel, special coating on request
Version of roof structure	optical sheet metal covering, waterproof roof with waterspout, Glass roof
Illumination	with roof variant, not possible with glass roof, according to customer wishes
Floor covering	Entrance mat, Entrance mat, according to the customer's request
Hot-air curtain system	possible, depends on the ceiling construction
Off-centre façade connection	Yes
Special functions on request	Yes
Operation	Programme switch DPS, Programme switch TPS, Control via building management system, PC, Control unit, Headquarters
Standard conformity	DIN 18650, EN 16005

ACCESSORIES**GC 307+ ***

Non-contact proximity switch for activating automatic doors



Designation	Description	Ident- No.	Colour	Dimensions	Type of installation
GC 307+ (hand icon) *	Proximity switch for the activation of automatic doors	195727	alpine white	80 x 80 x 21 mm	Surface-mounted
GC 307+ (WC icon) *	Proximity switch for the activation of automatic doors / Suitable for Powerturn, EMD, and standard sliding doors	195751	alpine white	80 x 80 x 21 mm	Surface-mounted
GC 307+ (hand icon) *	Proximity switch for the activation of automatic doors	193226	alpine white	80 x 80 x 8 mm	Flush-mounted installation
GC 307+ (WC icon) *	Proximity switch for the activation of automatic doors / Suitable for Powerturn, EMD, and standard sliding doors	195750	alpine white	80 x 80 x 8 mm	Flush-mounted installation

INTERLOCKING DOOR SYSTEM FUNCTION *

Prevents simultaneous opening of two doors that are installed in a row



Designation	Ident-No.	Dimensions	Type of installation	IP rating
Interlocking door system function *	109072	192 x 164 x 87 mm	Surface-mounted, Flush-mounted installation	IP66

AIR 30 *

Active infrared light switch for side panel protection of automatic curved sliding doors



Designation	Description	Ident-No.	Colour	Dimensions	Output
AIR 30	Light sensor for side panel protection of automatic curved sliding doors / Not in conformity with 18650!	072393	black	123 x 45 x 50 mm	Potential-free relay contact

SW MINI-BUTTON *

Can be used in the retail sector for one-time opening of automatic doors to leave the building in night mode



Designation	Ident-No.	Colour	Dimensions	Type of installation	IP rating
SW mini-button *	098861	black	20 x 20 x 11 x 22 mm	Flush-mounted installation	IP40



DIGITAL PROGRAMMABLE TIMER *

For time-controlled changes of modes of operation on automatic doors



E2 ROCKER PUSH BUTTON

Activation of all GEZE automatic doors



Designation	Ident-No.	Colour	Dimensions	Type of installation	IP rating
E2 rocker push button	094013	pure white matt	80.8 x 80.8 x 9.3 mm	Flush-mounted installation	IP20

LS 990 ROCKER PUSH BUTTON

Activation of all GEZE automatic doors



Designation	Ident-No.	Colour	Dimensions	Type of installation	IP rating
LS 990 rocker push button	098396	Stainless steel	81 x 81 x 11 mm	Flush-mounted installation	IP20

SERVICE INTERFACE

Faster diagnosis and maintenance



Designation	Description	Ident-No.	Dimensions
Service interface EC T2	to be mounted onto cover of sliding doors. Allows the connection of Service Terminal or Bluetooth Interface.Connector cable length: 3 meters	181028	3000 mm

Slimdrive SC *



CAN/CAN INTERFACE GALVANICALLY ISOLATED *

CAN extension module for automatic sliding, revolving, and swing door drives



Designation	Description	Ident-No.	Dimensions	Type of installation
CAN/CAN interface galvanically isolated *	CAN extension module for automatic sliding, revolving, and swing door drives	119952	55 x 25 x 22 mm	can be plugged in to DCU control units

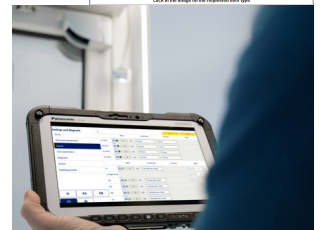
GEZECONNECTS SOFTWARE *

Wireless parameter setting and diagnostics of automatic door systems



MYGEZE CONNECTS *

Wireless parameter setting and diagnostics of automatic door systems



* The products designated above may vary in form, type, characteristics, function, or availability depending on the country. Please get in touch with your GEZE contact person if you have any questions.