

Product data sheet

Perlan 140 wood telescope



Telescopic sliding door fitting system for double or three-leaf
timber sliding doors with a leaf weight of 140 kg

AREAS OF APPLICATION

- Space-saving door hardware for large passages
- Living, office, and conference areas as well as hotels
- Single, double, and three-leaf sliding doors
- All other product features correspond to the Perlan 140 roller-guided sliding system

Perlan 140 wood telescope



PRODUCT FEATURES

- For timber, plastic, and metal leaves
- For two-leaf or three-leaf systems of up to 140 kg per leaf
- Can already be used for extremely narrow leaf widths from 475 mm upwards up to leaf widths of max. 1700 mm
- Pre-assembly of the telescope set on the door leaf allows for comfortable installation

TECHNICAL DATA

Productname	Perlan 140 wood telescope
Track geometry	straight

PART

TRACK PERLAN 140

Track for sliding door fitting



Designation	Description	Ident-No.	Colour	Dimensions	Leaf weight (max.)
Track Perlan 140	with countersunk drill holes (prepared for Perlan SoftStop)	142518	EV1	2850 mm	140 kg
Track Perlan 140	with countersunk drill holes (prepared for Perlan SoftStop)	128660	EV1	6000 mm	140 kg
Track Perlan 140	with countersunk drill holes (prepared for Perlan SoftStop)	128662	Stainless steel optic	6000 mm	140 kg
Track Perlan 140	with countersunk drill holes (prepared for Perlan SoftStop)	135048	EV1	2450 mm	140 kg
Track Perlan 140	with countersunk drill holes (prepared for Perlan SoftStop)	135047	EV1	2050 mm	140 kg
Track Perlan 140	with countersunk drill holes (prepared for Perlan SoftStop)	142519	EV1	3250 mm	140 kg
Track Perlan 140	with countersunk drill holes (prepared for Perlan SoftStop)	135046	EV1	1650 mm	140 kg

ACCESSORIES

MOUNTING TOOL FOR CABLE RIVETING SET

Tool for the installation of telescopic sliding door fittings



Designation	Description	Ident-No.
Mounting tool for cable riveting set	for the riveting of the wire cable for Perlan telescope	134035

CONFIGURED CONTINUOUS STAINLESS STEEL FLOOR GUIDE *

Continuous floor guide, flush to the floor, for all-glass leaves



Designation	Description	Ident-No.	Colour	Glass thickness
Configured continuous stainless steel floor guide *	Bespoke	124662	Stainless steel	8 - 12 mm

DOOR STOP

End stop for sliding leaves



Designation	Ident-No.	Fitting No.
Door stop	000339	1-66
Door stop	000342	2-66

Perlan 140 wood telescope



HEIGHT COMPENSATION MECHANISM / CEILING DISTANCE SET, WITH VARIABLE ADJUSTMENT

Height compensation with variable adjustment for ceiling installation of tracks



Designation	Description	Ident-No.	Material
Height compensation mechanism / ceiling distance set, with variable adjustment	6 pieces, height compensation mechanism with variable adjustment from 13 mm to 18 mm. For use for ceiling mounting using clip-on cover 100/145 as well as for general use on uneven ceilings	138099	Plastic

DOOR PULL HANDLE, CONFIGURED *

Push bar – round design for installation on glass leaves



Designation	Ident-No.	Colour
Door pull handle, configured *	127616	Stainless steel

FLUSH PULL, ANGULAR *

Stainless steel shell in rectangular design 128 x 82 mm



Designation	Description	Ident-No.	Colour	Dimensions	Type of installation
Flush pull, angular	Stainless steel shell in rectangular design 128 x 82 mm	169808	Satin stainless steel	128 x 82 x 20 mm	Door leaf installation

Perlan 140 wood telescope



DOOR STOPPER 01

Semicircular floor mounted door stopper made of stainless steel



Designation	Description	Ident-No.	Colour	Dimensions	Type of installation
Door stopper 01	Floor mounted door stopper, crescent	169797	Satin stainless steel	25 mm	Floor

FLUSH PULL, OVAL *

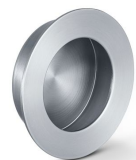
Stainless steel shell in oval design 40 x 120 mm



Designation	Description	Ident-No.	Colour	Dimensions	Type of installation
Flush pull, oval	Stainless steel shell in oval design 40 x 120 mm	169809	Satin stainless steel	120 x 40 x 14.5 mm	Door leaf installation

FLUSH PULL, ROUND *

Stainless steel shell in round design, 65 mm diameter



Designation	Description	Ident-No.	Colour	Dimensions	Type of installation
Flush pull, round	Stainless steel shell in round design, 65 mm diameter	169810	Satin stainless steel	16 mm	Door leaf installation

Perlan 140 wood telescope



DOOR STOPPER 04

Floor mounted door stopper made of stainless steel



Designation	Description	Ident-No.	Colour	Dimensions	Type of installation
Door stopper 04	Floor mounted door stopper	169800	Satin stainless steel	40 mm	Floor

PULL HANDLE D-SHAPE

Stainless steel pull handle pair



Designation	Description	Ident-No.	Colour	Glass thickness	Type of installation
Pull handle D-shape	Pull handle set for door thicknesses up to 50 mm and 10-12 mm glass thickness (set) - diameter: 22 mm; hole spacing: 300 mm	169819	Satin stainless steel	10 - 12 mm	Door leaf installation, Glass installation
Pull handle D-shape	Pull handle set for door thicknesses up to 50 mm and 10-12 mm glass thickness (set) - diameter: 19 mm; hole spacing: 200 mm	169818	Satin stainless steel	10 - 12 mm	Door leaf installation, Glass installation
Pull handle D-shape	Pull handle set for door thicknesses up to 50 mm and 10-12 mm glass thickness (set) - diameter: 19 mm; hole spacing: 150 mm	169817	Satin stainless steel	10 - 12 mm	Door leaf installation, Glass installation
Pull handle D-shape	Pull handle set for door thicknesses up to 50 mm and 10-12 mm glass thickness (set) - diameter: 25 mm; hole spacing: 300 mm	169820	Satin stainless steel	10 - 12 mm	Door leaf installation, Glass installation

PULL HANDLE H-SHAPE

Stainless steel pull handle pair



Designation	Description	Ident-No.	Colour	Glass thickness	Type of installation
Pull handle H-shape	Pull handle set for door thicknesses up to 50 mm and 10-12 mm glass thickness (set) - diameter: 25 mm; hole spacing: 300 mm; total length: 400 mm	169822	Satin stainless steel	10 - 12 mm	Door leaf installation, Glass installation
Pull handle H-shape	Pull handle set for door thicknesses up to 50 mm and 10-12 mm glass thickness (set) - diameter: 25 mm; hole spacing: 250 mm; total length: 350 mm	169821	Satin stainless steel	10 - 12 mm	Door leaf installation, Glass installation

Perlan 140 wood telescope



Designation	Description	Ident-No.	Colour	Glass thickness	Type of installation
Pull handle H-shape	Pull handle set for door thicknesses up to 50 mm and 10-12 mm glass thickness (set) - diameter: 32 mm; hole spacing: 600 mm; total length: 800 mm	169823	Satin stainless steel	10 - 12 mm	Door leaf installation, Glass installation
Pull handle H-shape	Pull handle set for door thicknesses up to 50 mm and 10-12 mm glass thickness (set) - diameter: 32 mm; hole spacing: 1200 mm; total length: 1400 mm	169824	Satin stainless steel	10 - 12 mm	Door leaf installation, Glass installation

COMPLETE CLIP-ON COVER SET 100

Clip-on cover for covering Perlan door fitting systems



Designation	Description	Ident-No.	Type of installation	Leaf material
Complete clip-on cover set 100	for wall and ceiling mounting, continuous cover, bespoke configuration	138098	Wall, Ceiling	Glass, Plastic, Metal, Wood

* The products designated above may vary in form, type, characteristics, function, or availability depending on the country. Please get in touch with your GEZE contact person if you have any questions.