

Product data sheet

GC 339+ *



Safety sensor for automatic sliding, revolving, and curved sliding doors, as well as for windows

AREAS OF APPLICATION

- Protection of automatic sliding doors
- Automatic sliding doors without protective leaves to protect the secondary closing edge
- Interior and exterior doors
- Protection of the main and secondary closing edges on automated windows

PRODUCT DESCRIPTION

This active infrared detector secures the hazardous area of sliding doors in accordance with EN 16005 / DIN 18650 and on revolving doors in accordance with EN 16005. A selection of ten active infrared detector settings allows for precise protection of various door situations. The optimised housing prevents undesirable insects from getting inside. In addition, the active infrared windows can be cleaned or replaced as needed after they are removed.

PRODUCT FEATURES

- Reliable detection up to an installation height of 3500 mm
- Ten adjustable light curtain configurations without additional light prisms
- Convenient commissioning via matrix display
- Auxiliary LEDs aid in optimal positioning of the interior light curtain in front of the door leaves during commissioning
- Avoidance of hazards at pinching and shearing edges on automated windows
- All settings can be changed via remote control

TECHNICAL DATA

Productname	GC 339+ *
Dimensions	209 x 58 x 47 mm
Technology	Active infrared beams
Number of active infrared detectors	2
Operating voltage	12-24 V DC/AC
Switching voltage	42 V
Switching current	100 mA
Operating current	125 mA
Output	Potential-free relay contact
IP rating	IP54
Connection type	System plug-type connector
Connector cable length	2600 mm
Adjustability	with push of button, with remote control
Installation height (min.)	2000 mm
Installation height (max.)	3500 mm
Service temperature	-25 - 55 °C
Humidity	0-95 % relative, non-condensing
Standard conformity	EN 16005, DIN 18650

VARIANTS / ORDER INFO

Designation	Description	Ident-No.	Colour	Dimensions	Output
GC 339+ *	Safety sensor for automatic doors	203859	according to RAL	209 x 58 x 47 mm	Potential-free relay contact
GC 339+ *	Safety sensor for automatic doors	203858	black	209 x 58 x 47 mm	Potential-free relay contact

ACCESSORIES**CEILING BRACKET GC 339**

For attaching the sensor to the ceiling



Designation	Description	Ident-No.	Colour
Ceiling bracket GC 339	Compatible with GC 339+ sensors	153568	black

CEILING INSTALLATION KIT GC 339, SHORT *

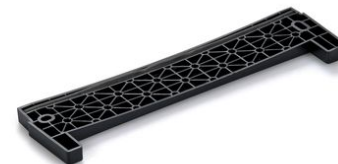
Installation kit for attaching the detector to the ceiling



Designation	Description	Ident-No.	Colour	Dimensions
Ceiling installation kit GC 339, short *	Compatible with GC 339+ sensors	200682	black	254 x 60 x 3 mm

CURVED ADAPTER FOR GC 339

For attaching sensors to curved sliding doors or revolving doors



Designation	Description	Ident-No.	Colour	Dimensions
Curved adapter for GC 339	Compatible with GC 339+ sensors	151540	black	209 x 58 x 10 mm

CEILING INSTALLATION KIT GC 363 / GC 339

Installation kit for attaching the detector to the ceiling



Designation	Description	Ident-No.	Colour	Dimensions
Ceiling installation kit GC 363 / GC 339	Installation kit for integrating the detector in the ceiling / Compatible with GC 363+ /GC 339+ sensors	151254	white	360 x 83.3 x 20.5 mm
Ceiling installation kit GC 363 / GC 339	Installation kit for integrating the detector in the ceiling / Compatible with GC 363+ /GC 339+ sensors	151253	black	360 x 83.3 x 20.5 mm

WEATHER HOOD GC 363 / GC 339 *

Protects the sensor when installed outdoors



Designation	Description	Ident-No.	Colour	Dimensions
Weather hood for GC 363, GC 339	Protection against precipitation in outdoor use / Compatible with GC 363+ /GC 339+ sensors	158250	black	309 x 73 x 73 mm

SMART DAISY CHAIN HUB *

Hub for series connection of up to three GC 363+ combined detectors



Designation	Description	Ident-No.	Colour
Smart Daisy Chain Hub *	Hub for series connection of up to three sliding door sensors. Only compatible with GC 363+ and GC 339+ sensors.	203860	blue

GC 339+ *



* The products designated above may vary in form, type, characteristics, function, or availability depending on the country. Please get in touch with your GEZE contact person if you have any questions.