

# Product data sheet

## E 3000



Spindle drive for particularly heavy roof windows

### AREAS OF APPLICATION

- Very heavy windows in the roof area
- Natural ventilation, smoke and heat extraction system, natural smoke and heat extraction device (SHEV)
- Use in the exhaust air system
- Installation on wooden, PVC or metal windows
- Frame installation

**PRODUCT FEATURES**

- Very high tensile and compressive force
- Robust and corrosion-resistant design with built-in end position damping
- Aluminium housing for highest design demands
- Extensive brackets allow versatile installation on main or secondary closing edges
- Synchronisation of max. four drives without external control unit
- Tested in accordance with EN 12101-2 (natural smoke and heat extraction devices)

**TECHNICAL DATA**

Productname	E 3000
Dimensions	50 x 50 mm
Opening speed RWA	7.8 mm/s
Opening speed ventilation	7.8 mm/s
Force of pressure (max.)	3000 N
Holding force (max.)	25000 N
Tensile force	3000 N
Voltage at operation	24 V ± 25 %
Operating voltage	24 V DC
Current consumption	5 A
Power consumption	91 W
Residual ripple	20 %
Duty rating	30 %
Connector cable length	3 m
Special length of connector cable	5 m, 10 m
Min. core cross section	1 mm <sup>2</sup>
Number of cores	3 cores
Service temperature	-5 - 75 °C
IP rating	IP54
protection rating	III
Syncro function	Yes
Type of additional locking mechanism	Locking drive
Type of stroke shortening	Factory setting
End position cut-off extended	electronic
End position cut-off retracted	electronic
Overload cut-off	Yes
Complete opening within 60 s	yes, up to 300 mm stroke
SHEV tested	Yes
SHEV additional information	yes, up to 300 mm stroke
Number synchronisation drive units	4

KNX ability	No
OUTWARD-opening roof window	Yes

**VARIANTS / ORDER INFO**

Designation	Description	Ident-No.	Colour	Stroke	Dimensions
E 3000		162391	EV1	1000 mm	1465 x 50 x 50 mm
E 3000		162389	EV1	500 mm	965 x 50 x 50 mm
E 3000		162390	EV1	750 mm	1215 x 50 x 50 mm
E 3000 special version	Can be configured: Stroke, cable length, colour	162392	according to RAL		50 x 50 mm
GEZE E 3000 Syncro *	Consisting of two drives with integrated Syncro control unit	162395	EV1	1000 mm	965 mm
GEZE E 3000 Syncro *	Consisting of two drives with integrated Syncro control unit	162393	EV1	500 mm	965 mm
GEZE E 3000 Syncro *	Consisting of two drives with integrated Syncro control unit	162394	EV1	750 mm	965 mm
GEZE E 3000 Syncro special version *	Can be configured: Stroke, cable length, colour, Syncro 2-4	162396	according to RAL		

**ACCESSORIES****ROOF WINDOW BRACKET E 3000 \***

For installation of the E 1500 S and E 3000 spindle drives



Designation	Ident-No.	Colour
Roof window bracket E 3000	121292	according to RAL
Roof window bracket E 3000	121291	white RAL 9016
Roof window bracket E 3000	121280	silver-coloured

**BRACKET MOUNT E 3000 NSK AP \***

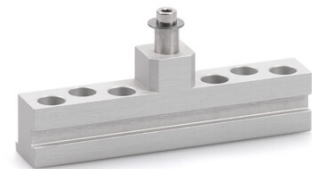
For roof window installation of the E 1500 S and E 3000 spindle drives



Designation	Description	Ident-No.	Colour
Bracket mount E 3000 NSK AP *	suitable for installation on the secondary closing edge of roof windows	140714	silver-coloured

**LEAF BRACKET E 3000 NSK HE \***

For roof window installation of the E 1500 S and E 3000 spindle drives



Designation	Description	Ident-No.	Colour
Leaf bracket E 3000 NSK HE *	suitable for installation on the secondary closing edge of roof windows (Heroal 85 D)	136206	EV1

**CONICAL SLEEVE E 3000**

For installation of the E 1500 S and E 3000 spindle drives



Designation	Description	Ident-No.	Colour
Conical sleeve E 3000	for installation of E 1500 S and E 3000	121275	white RAL 9016
Conical sleeve E 3000	for installation of E 1500 S and E 3000	121276	according to RAL
Conical sleeve E 3000	for installation of E 1500 S and E 3000	121274	silver-coloured

**LEAF BRACKET E 1500/ E 3000 NSK AP \***

For installation of the E 1500 N, E 1500 S, E 3000 and E 250 NT spindle drives

**LEAF BRACKET E 3000 \***

For installation of the E 1500 S and E 3000 spindle drives



Designation	Ident-No.	Colour
Leaf bracket E 3000 *	121277	silver-coloured
Leaf bracket E 3000 *	121279	according to RAL
Leaf bracket E 3000 *	121278	white RAL 9016

**LEAF BRACKET E 3000 HSK HE \***

For installation of the E 1500 S and E 3000 spindle drives



Designation	Description	Ident-No.	Colour
Leaf bracket E 3000 HSK HE *	suitable for installation on the main closing edge of roof windows (Heroal 085 D)	136207	EV1

**LEAF BRACKET E 3000 NSK A-HU \***

For installation of the E 1500 S and E 3000 spindle drives



Designation	Description	Ident-No.	Colour
Leaf bracket E 3000 NSK A-HU	suitable for installation on the secondary closing edge of roof windows (Alcoa AA 100, Hueck VF 50/60)	136205	EV1

**LEAF BRACKET E 3000 NSK W-HU \***

For installation of the E 1500 S and E 3000 spindle drives



Designation	Description	Ident-No.	Colour
Leaf bracket E 3000 NSK W-HU *	suitable for installation on the secondary closing edge of roof windows (Wicona WT 50/60, Hueck 85 E)	136204	EV1

**BRACKET E 3000 NSK \***

For roof window installation of the E 1500 S and E 3000 spindle drives



Designation	Description	Ident-No.	Colour
Bracket E 3000 NSK *	suitable for installation on the secondary closing edge of roof windows. Supplied by GEZE without conical sleeve ID no. 121274	130525	silver-coloured

**BRACKET E 3000 NSK S \***

For roof window installation of the E 1500 S and E 3000 spindle drives



Designation	Description	Ident-No.	Colour
Bracket E 3000 NSK S *	suitable for installation on the secondary closing edge of roof windows (Schüco AWS57 RO). Supplied by GEZE without conical sleeve ID no. 121274	136183	silver-coloured

**BRACKET MOUNT E 3000 HSK**

For roof window installation of the E 1500 S and E 3000 spindle drives



Designation	Description	Ident-No.	Colour
Bracket mount E 3000 HSK	suitable for installation on the main closing edge of roof windows	136202	silver-coloured

**BRACKET MOUNT E 3000 NSK \***

For roof window installation of the E 1500 S and E 3000 spindle drives



Designation	Description	Ident-No.	Colour
Bracket mount E 3000 NSK *	suitable for installation on the secondary closing edge of roof windows	136203	silver-coloured

**POWER SUPPLY NT 6.25 A-24 V HS \***

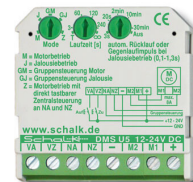
24 V power supply for top hat rail mounting



Designation	Description	Ident-No.	Colour	Dimensions	Operating voltage
Power supply NT 6.25 A-24 V HS *	Output voltage 24 V DC Installation on top hat rail, 4 horizontal pitches	192113	grey	72 x 95 x 66.5 mm	230 V DC +/- 10%

**OPEN/CLOSE WINDOW CONTROL \***

Open/Close window controller for simple ventilation control



Designation	Description	Ident-No.	Dimensions	Operating voltage	Type of installation
OPEN/CLOSE window control unit 24 V - HS *	Control unit (individual, group, central, time) for 24 V window drives for installation on a top hat rail. Output current max. 8 A	163812	18 x 88 x 58 mm	24 V	Top hat rail mounting
OPEN/CLOSE window control unit 24 V - UP *	Control unit (individual, group, central, time) for 24 V window drives for installation in a flush-mounted box. Output current max. 8 A	163813	43 x 43 x 18.5 mm	24 V	Flush-mounted installation
OPEN/CLOSE window control unit 230 V - HS *	Control unit (individual, group, central, time) for 230 V window drives for installation on a top hat rail. Output current max. 10 A	163814	18 x 88 x 58 mm	230 V	Top hat rail mounting
OPEN/CLOSE window control unit 230 V - UP *	Control unit (individual, group, central, time) for 230 V window drives for installation in a flush-mounted box. Output current max. 10 A	163815	43 x 43 x 18.5 mm	230 V	
OPEN/CLOSE universal window control 230 V AC - TOP HAT RAIL *	Control unit (individual, group, central, time) with potential-free inputs for 230 V window drives for installation on a top hat rail. Output current max. 10 A	163816	18 x 88 x 58 mm	230 V	Top hat rail mounting

**LEAF BRACKET E 1500/ E 3000 NSK S \***

For installation of the E 1500 N, E 1500 S, E 3000 and E 250 NT spindle drives



Designation	Description	Ident-No.	Colour
Leaf bracket E 1500/ E 3000 NSK S *	suitable for installation on the secondary closing edge of roof windows (Schüco AWS57 RO)	136186	EV1



**SERVICE CASE IQ WINDOWDRIVE**

For commissioning and parameter setting of the window drives from the IQ windowdrive range



Designation	Description	Ident-No.	Colour	Supply voltage	Output current (max.)
Service case GEZE IQ windowdrive	for commissioning of 24 V window drives and for parameter setting of the IQ windowdrive drives in combination with the ST 220	142586	silver-coloured	100 - 240 V AC	5.5 A

**LTA-LSA \***

Vent switch with rotary knob for OPEN / CLOSE



Designation	Description	Ident-No.	Colour	Dimensions	Type of installation
LTA-LSA vent switch *	with rotary knob, can be used as "open-close" vent switch or stay-put as vent switch "open-stop-close"	118476	alpine white	80 x 80 mm	Flush-mounted installation

**SURFACE-MOUNTED HOUSING \***

Housing for surface mounting of top hat rail components such as power supply units or control units



Designation	Description	Ident-No.	Colour	Dimensions	IP rating
Surface-mounted housing *	Size: W x H x D = 193 x 130 x 82 mm. For electronic top hat rail components, e.g. power supply units	152010	white	193 x 130 x 82 mm	IP40



---

\* The products designated above may vary in form, type, characteristics, function, or availability depending on the country. Please get in touch with your GEZE contact person if you have any questions.