

GEZE wireless program automatic

EN Installation and service instructions

132674-06



1 Safety notices

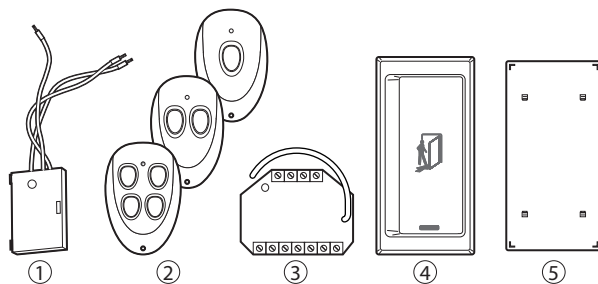
It is important to follow these instructions for the safety of persons. These instructions must be kept.

- Before installation, read and observe the safety notes for these components and the drive. Warranty claims require proper mounting, installation and maintenance in accordance with the manufacturer's specifications.
- Only appropriately qualified people may carry out installation, commissioning and maintenance. Unauthorised modifications to the system release GEZE from liability for any resulting damages.
- Only use GEZE original parts for repair and service work.
- Observe the latest versions of guidelines, standards and country-specific regulations.
- Protect the components of the GEZE wireless program automatic from construction dirt and water.

2 Intended use

The GEZE wireless program automatic is used for activating GEZE automatic door systems. Wire-bound switches and push buttons can be added or replaced.

3 Wireless program automatic



- 1 Transmitting module WTM (Id. No. 131212)
- 2 Remote control WTH-1 (ID no. 131209)
Remote control WTH-2 (ID no. 131210)
Remote control WTH-4 (ID no. 131211)
- 3 Receiving module WRM-24 (ID no. 131213)
- 4 Elbow switch KFT, white (Id. No. 114078), stainless steel (Id. No. 114077)
- 5 Backplate for the elbow switch KFT, white (ID no. 131219), stainless steel (ID no. 131220)

4 Functional description

The following two commands are possible depending on the operating mode at the receiving module:

4.1 Pulse command

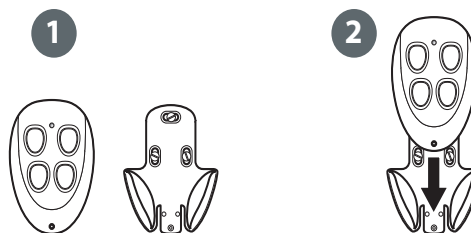
- ▶ Press the corresponding push button briefly (< 2 seconds).
 - The door opens and closes in accordance with the set hold-open times.

4.2 Continuous command

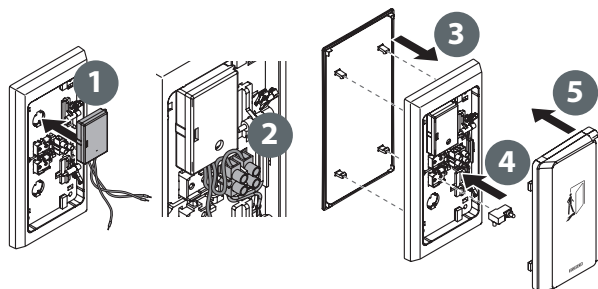
- ▶ Press the corresponding push button long (> 2 seconds).
 - The door opens and remains open.
 - ▶ To close the door press the corresponding push button again.
- If the door is activated by means of the continuous command and remains open for a longer period, the message 37, 38, 39 or 40 "Controlling longer than 4 min" may be displayed on the programme switch.

5 Mounting / connection

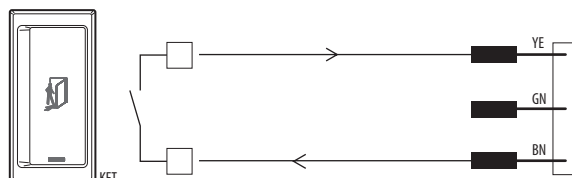
5.1 Connecting the radio transmitter



Remote control with wall holder

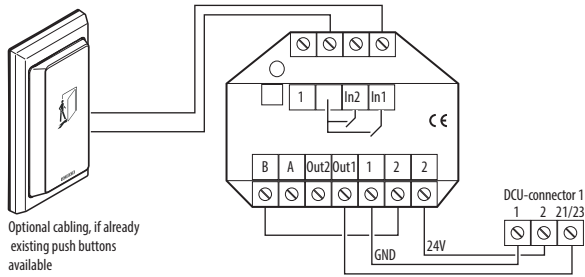


Installation of the transmitting module WTM in the elbow switch KFT

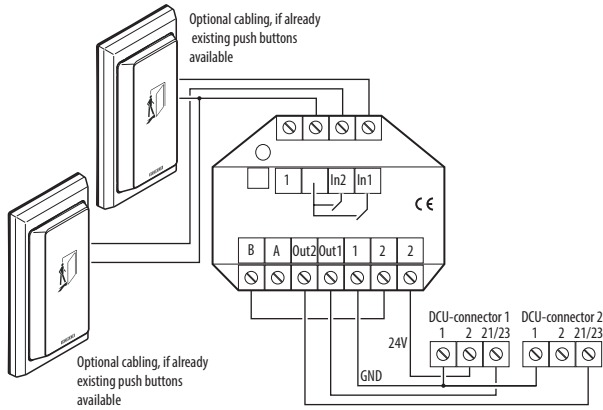


Connection of the transmitting module WTM in the elbow switch KFT

5.2 Connecting the receiving module



1-channel connection of the receiving module WRM-24, e.g. to a door

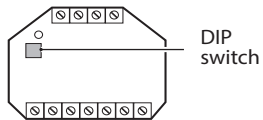


2-channel connection of the receiving module WRM-24, e.g. to two doors (same electric circuit) or two entrances at one door

5.3 Receiving module operating mode

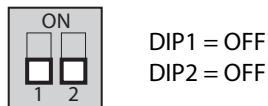


The operating mode is set by means of the DIP switch on the receiving module that has to be set correctly before initial commissioning.



DIP switch on the receiving module WRM-24

Pulsed operation (see chapter 4.1):



Pulsed and continuous operation (see chapter 4.2):

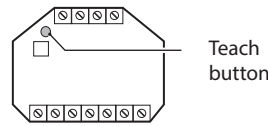


* Factory setting

6 Commissioning

6.1 Teach-in of radio transmitters at a 1-channel connection

For safety reasons the radio transmitter can only be taught during the first 5 minutes after the operating voltage has been switched on at the drive.



Teach button at the receiving module WRM-24

- ▶ Press the teach button on the receiving module for approx. 1 second in order to activate teach-in.
 - The receiving module beeps 1× briefly every 3 seconds.
 - The memory for the first channel is selected.
- ▶ Press the corresponding push button on the radio transmitter briefly within 30 seconds.
 - The receiving module beeps 1× long as confirmation.
 - The radio transmitter has been taught successfully and terminates teaching mode automatically.

If further radio transmitters are to be taught, repeat the steps.

6.2 Teach-in of radio transmitters at a 2-channel connection

Steps from chapter 6.1 must be carried out in order to teach-in the radio transmitter at the first channel.

Teach-in at the second channel is done as follows:

- ▶ Press the teach button on the receiving module for approx. 1 second.
 - The receiving module beeps 1× briefly every 3 seconds.
- ▶ Press the teach button again for approx. 1 second.
 - The receiving module beeps 2× briefly every 3 seconds.
 - The memory for the second channel is selected.
- ▶ Press the corresponding push button on the radio transmitter briefly within 30 seconds.
 - The receiving module beeps 1× long as confirmation.
 - The receiving module has been taught successfully and terminates teaching mode automatically.

If further radio transmitters are to be taught, repeat the steps from chapter 6.1 and / or chapter 6.2.

A maximum of 85 radio transmitters can be taught per receiving module. If more than 85 radio transmitters are to be taught, additional receiving modules are to be connected.

6.3 Deleting radio transmitters

For safety reasons the radio transmitter can only be deleted during the first 5 minutes after the operating voltage has been switched on.

- ▶ Press the teach button at the receiving module for approx. 10 seconds.
 - The receiving module beeps 1× long as confirmation.
 - All the taught radio transmitters have been deleted successfully from the memory.

Taught radio transmitters can only be overwritten. If a taught radio transmitter is to be deleted, all the taught radio transmitters have to be deleted.

7 Maintenance / battery change

7.1 Remote control

The battery service life is designed for approx. 30 000 operations. When the battery power declines, the LED begins to flash during operation. The battery should then be replaced by a new battery A23/MN21/P23GA.

7.2 Transmitting module

The battery service life is designed for approx. 50 000 operations. When the battery power declines, the LED begins to flash during operation. The battery should then be replaced by a new CR 2032 battery.

8 Technical data

Frequency:	433.952 MHz
Transmission power:	<10 mW ERP
Range:	approx. 30 m
Security:	Rolling code
Power supply:	WTH: 12 V, Battery A23/MN21/P23GA, 50 mA
	WTM: 3 V, CR 2032 battery, 220 mA
	WRM-24: 24 V, 12.5 mA (current consumption in standby)
Relay contact:	WRM-24: 2 outputs 100 mA, 48 V
Dimensions (W × H × D):	WTH: 78 × 51 × 23 mm
	WTM: 44 × 30 × 11 mm
	WRM-24: 52 × 47 × 23 mm
IP rating:	WTH: IP 54
	WTM: IP 20
	WRM-24 IP 20
Storage temperature:	-20 to +85 °C
Service temperature:	0 to +50°C
Humidity:	max. 95%, non-condensing

9 Declaration of conformity



GEZE GmbH hereby declares that the wireless system type GEZE wireless program automatic complies with the Directives 2014/53/EU and 2011/65/EU. The complete text of the EU Declaration of Conformity is available at the following internet address: www.geze.com



For EU countries: In compliance with Directive 2012/19/EU concerning Waste Electrical and Electronic Equipment (WEEE).

Germany

GEZE GmbH
Niederlassung Süd-West
Tel. +49 (0) 7152 203 594
E-Mail: leonberg.de@geze.com

GEZE GmbH
Niederlassung Süd-Ost
Tel. +49 (0) 7152 203 6440
E-Mail: muenchen.de@geze.com

GEZE GmbH
Niederlassung Ost
Tel. +49 (0) 7152 203 6840
E-Mail: berlin.de@geze.com

GEZE GmbH
Niederlassung Mitte/Luxemburg
Tel. +49 (0) 7152 203 6888
E-Mail: frankfurt.de@geze.com

GEZE GmbH
Niederlassung West
Tel. +49 (0) 7152 203 6770
E-Mail: duesseldorf.de@geze.com

GEZE GmbH
Niederlassung Nord
Tel. +49 (0) 7152 203 6600
E-Mail: hamburg.de@geze.com

GEZE Service GmbH
Tel. +49 (0) 1802 923392
E-Mail: service-info.de@geze.com

Austria

GEZE Austria
E-Mail: austria.at@geze.com
www.geze.at

Benelux

GEZE Benelux B.V.
E-Mail: benelux.nl@geze.com
www.geze.be
www.geze.nl

Bulgaria

GEZE Bulgaria - Trade
E-Mail: office-bulgaria@geze.com
www.geze.bg

China

GEZE Industries (Tianjin) Co., Ltd.
E-Mail: chinasales@geze.com.cn
www.geze.com.cn

GEZE Industries (Tianjin) Co., Ltd.
Branch Office Shanghai
E-Mail: chinasales@geze.com.cn
www.geze.com.cn

GEZE Industries (Tianjin) Co., Ltd.
Branch Office Guangzhou
E-Mail: chinasales@geze.com.cn
www.geze.com.cn

GEZE Industries (Tianjin) Co., Ltd.
Branch Office Beijing
E-Mail: chinasales@geze.com.cn
www.geze.com.cn

France

GEZE France S.A.R.L.
E-Mail: france.fr@geze.com
www.geze.fr

Hungary

GEZE Hungary Kft.
E-Mail: office-hungary@geze.com
www.geze.hu

Iberia

GEZE Iberia S.R.L.
E-Mail: info.es@geze.com
www.geze.es

India

GEZE India Private Ltd.
E-Mail: office-india@geze.com
www.geze.in

Italy

GEZE Italia S.r.l
E-Mail: italia.it@geze.com
www.geze.it

GEZE Engineering Roma S.r.l
E-Mail: italia.it@geze.com
www.geze.it

Korea

GEZE Korea Ltd.
E-Mail: info.kr@geze.com
www.geze.com

Poland

GEZE Polska Sp.z o.o.
E-Mail: geze.pl@geze.com
www.geze.pl

Romania

GEZE Romania S.R.L.
E-Mail: office-romania@geze.com
www.geze.ro

Russia

OOO GEZE RUS
E-Mail: office-russia@geze.com
www.geze.ru

Scandinavia – Estonia

GEZE Scandinavia AB eesti filial
E-Mail: estonia@geze.com
www.geze.ee

Scandinavia – Finland

GEZE Scandinavia AB Filial Finland
E-Mail: finland@geze.com
www.geze.fi

Scandinavia – Latvia

GEZE Scandinavia AB Latvijas filiāle
E-Mail: latvia@geze.com
www.geze.lv

Scandinavia – Lithuania

GEZE Scandinavia AB Filial Lietu.
E-Mail: lithuania@geze.com
www.geze.lt

Scandinavia – Sweden

GEZE Scandinavia AB
E-Mail: sverige.se@geze.com
www.geze.se

Scandinavia – Norway

GEZE Scandinavia AB avd. Norge
E-Mail: norge.se@geze.com
www.geze.no

Scandinavia – Denmark

GEZE Danmark
E-Mail: danmark.se@geze.com
www.geze.dk

Singapore

GEZE (Asia Pacific) Pte, Ltd.
E-Mail: gezesea@geze.com.sg
www.geze.com

South Africa

GEZE South Africa (Pty) Ltd.
E-Mail: info@gezesa.co.za
www.geze.co.za

Switzerland

GEZE Schweiz AG
E-Mail: schweiz.ch@geze.com
www.geze.ch

Türkiye

GEZE Kapi ve Pencere Sistemleri
E-Mail: office-turkey@geze.com
www.geze.com

Ukraine

LLC GEZE Ukraine
E-Mail: office-ukraine@geze.com
www.geze.ua

United Arab Emirates/GCC

GEZE Middle East
E-Mail: gezeme@geze.com
www.geze.ae

United Kingdom

GEZE UK Ltd.
E-Mail: info.uk@geze.com
www.geze.com

GEZE GmbH

Reinhold-Vöster-Straße 21–29 Tel.: 0049 7152 203 0

71229 Leonberg Fax: 0049 7152 203 310

Germany

www.geze.com

