

# Product data sheet

# **TS 5000 SoftClose R-ISM/G \***



Overhead door closer with guide rail system for double leaf doors with latching action/brake-to-stop function, integrated closing sequence control, electric hold-open device on the active leaf and smoke switch control unit

## **AREAS OF APPLICATION**

- Fire and smoke protection doors
- Right and left double leaf single-action doors
- Symmetrical and asymmetrical division of door possible
- Single-action doors up to 2800 mm hinge clearance and 1400 mm leaf width
- Minimum hinge clearance 1300 mm, minimum width of passive leaf 400 mm
- Door leaf installation hinge side



## PRODUCT FEATURES

- System consisting of two TS 5000 door closers and R-ISM/G guide rail with holding open device on the active leaf
- Closing force of EN 2-6 with variable adjustment
- Operating voltage 230 V AC
- Can be used for right and left hand doors without conversion
- Query that the door leaf is held open via a potential-free contact on the electric hold-open device
- The passive leaf can be held open using a hold-open magnet
- Integrated smoke switch control unit, whose signal closes the door automatically in the event of a fire
- Smoke switch with contamination indicator and adaption of the alarm threshold
- Additional smoke detectors can be fitted
- Electric hold-open device in the guide rail with hold-open area of 80°-130°
- Latching action/smooth latching function can be adjusted from the front via valve
- Closing speed can be individually adjusted
- Integrated back check, slows down doors that are thrown open forcefully
- Visual closing force display for easy control of the setting
- All functions can be adjusted from the front

## TECHNICAL DATA

Productname	TS 5000 SoftClose R-ISM/G *
Barrier-free in accordance with DIN 18040 up to leaf width (max.) in mm	1400 mm
Leaf width (max.)	1400 mm
Type of installation	Door leaf installation hinge side
Opening angle (max.)	180 °
Input voltage	230 V AC
Frequency of supply voltage	50 Hz
Minimum hinge clearance	1500 mm
Minimum passive leaf width	400 mm
Suitability for fire protection doors	Yes
Closing force adjustable	Yes, stepless
Adjustable closing speed	Yes
Latching action adjustable	Yes, via valve
Latching action speed, adjustable	Yes
Back check integrated	Yes, hydraulically adjustable
Position of closing force adjustment	Front
Visual closing force display	Yes
Hold-open function	Electrical
Hold-open device on the active leaf / passive leaf	Yes / No

**TS 5000 SoftClose R-ISM/G \***

Hold-open range	80° - 130°
Smoke switch integrated	Yes
Closing sequence control integrated	Yes

**PART****R-ISM/G GUIDE RAIL TS 5000 \***

continuous, with integrated closing sequence control, electric hold-open device on the active leaf, smoke switch control unit, and levers



Designation	Description	Ident-No.	Colour	Supply voltage	Dimensions
R-ISM/G guide rail TS 5000 *	continuous, with integrated closing sequence control, electric hold-open device on the active leaf, smoke switch control unit, and levers	115621	according to RAL	230 V AC	2740 x 55 x 30 mm
R-ISM/G guide rail TS 5000 *	continuous, with integrated closing sequence control, electric hold-open device on the active leaf, smoke switch control unit, and levers	115619	silver-coloured	230 V AC	2740 x 55 x 30 mm
R-ISM/G guide rail TS 5000 *	continuous, with integrated closing sequence control, electric hold-open device on the active leaf, smoke switch control unit, and levers	115620	Stainless steel optic	230 V AC	2740 x 55 x 30 mm

**CLOSER BODY TS 5000 SOFTCLOSE \***

For overhead door closers with guide rail EN 2-6 with individually adjustable closing speed from 0-15° door opening angle



Designation	Description	Ident-No.	Colour	Closing force in accordance with EN 1154	Dimensions
TS 5000 SoftClose door closer *	Closing force EN 2-6, with back check and integrated latching action speed with variable adjustment, for door deceleration (without guide rail and lever)	183430	white RAL 9016	EN 2 - 6	287 x 47 x 60 mm
TS 5000 SoftClose door closer *	Closing force EN 2-6, with back check and integrated latching action speed with variable adjustment, for door deceleration (without guide rail and lever)	181792	silver-coloured	EN 2 - 6	287 x 47 x 60 mm
TS 5000 SoftClose door closer *	Closing force EN 2-6, with back check and integrated latching action speed with variable adjustment, for door deceleration (without guide rail and lever)	181793	according to RAL	EN 2 - 6	287 x 47 x 60 mm

**TS 5000 SoftClose R-ISM/G \***

Designation	Description	Ident-No.	Colour	Closing force in accordance with EN 1154	Dimensions
TS 5000 SoftClose door closer *	Closing force EN 2-6, with back check and integrated latching action speed with variable adjustment, for door deceleration (without guide rail and lever)	183431	Stainless steel face plate	EN 2 - 6	287 x 47 x 60 mm

**ACCESSORIES****COVER CAP DOOR CLOSER \***

For TS 4000/5000, curved shape

Designation	Description	Ident-No.	Colour	Dimensions
Cover cap door closer *	for TS 5000/TS 4000, semi-radial, can only be used for door leaf installation	092943	Polished stainless steel	337 x 51 x 72 mm
Cover cap door closer *	for TS 5000/TS 4000, semi-radial, can only be used for door leaf installation	092944	Satin stainless steel	337 x 51 x 72 mm

**COVER CAP DOOR CLOSER \***

For TS 4000/5000, rectangular shape

Designation	Description	Ident-No.	Colour	Dimensions
Cover cap door closer *	for TS 5000 / TS 4000, square, can only be used for door leaf installation	092938	Polished stainless steel	298 x 51 x 72 mm
Cover cap door closer *	for TS 5000 / TS 4000, square, can only be used for door leaf installation	092939	Satin stainless steel	298 x 51 x 72 mm

**COVER CAP DOOR CLOSER \***

For TS 5000 (L)/TS 4000, can only be used for door leaf installation



**TS 5000 SoftClose R-ISM/G \***

Designation	Description	Ident-No.	Colour	Dimensions	Material
Cover cap door closer *	for TS 5000 / TS 5000 L / TS 4000, can only be used for door leaf installation	067726	white RAL 9016	298 x 55 x 67.2 mm	
Cover cap door closer *	for TS 5000 / TS 5000 L / TS 4000, can only be used for door leaf installation	072696	Stainless steel	298 x 55 x 67.2 mm	Stainless steel
Cover cap door closer *	for TS 5000 / TS 5000 L / TS 4000, can only be used for door leaf installation	067724	silver-coloured	298 x 55 x 67.2 mm	
Cover cap door closer *	for TS 5000 / TS 5000 L / TS 4000, can only be used for door leaf installation	000756	according to RAL	298 x 55 x 67.2 mm	
Cover cap door closer *	for TS 5000 / TS 5000 L / TS 4000, can only be used for door leaf installation	067725	dark bronze	298 x 55 x 67.2 mm	

**CB FLEX**

Carry bar for safe closing of double leaf fire protection doors



Designation	Description	Ident-No.	Colour	Material
GEZE CB flex	for use on all 2-leaf rebated doors. Concealed length adjustment with variable adjustment up to 210 mm leaf protrusion, hinged mechanism not visible, profile can be shortened if necessary, with attachment material	182652	white RAL 9016	
GEZE CB flex	for use on all 2-leaf rebated doors. Concealed length adjustment with variable adjustment up to 210 mm leaf protrusion, hinged mechanism not visible, profile can be shortened if necessary, with attachment material	153602	silver-coloured	
GEZE CB flex	for use on all 2-leaf rebated doors. Concealed length adjustment with variable adjustment up to 210 mm leaf protrusion, hinged mechanism not visible, profile can be shortened if necessary, with attachment material	153728	according to RAL	

**GC 172 \***

Wireless smoke detector for wireless connection to the GC 171 wireless module



Designation	Description	Ident-No.	Supply voltage	Dimensions	Type of installation
GC 172 wireless smoke detector *	for the wireless connection to GEZE hold-open systems, battery-operated with 8 years battery lifetime, with base, tested in accordance with EN 54-7 and EN 54-25, general construction technique permit for use with all GEZE hold-open systems	195522	3 V DC	110 x 110 x 70 mm	Ceiling

**TS 5000 SoftClose R-ISM/G \*****GC 173**

Wireless thermal detector for wireless connection to the GC 171 wireless module



Designation	Description	Ident-No.	Supply voltage	Dimensions	Type of installation
GC 173 wireless thermal detector	for the wireless connection to GEZE hold-open systems, battery-operated with 8 years battery lifetime, with base, tested in accordance with EN 54-7 and EN 54-25, general construction technique permit for use with all GEZE hold-open systems	195523	3 V DC	110 x 110 x 70 mm	Ceiling

**MAGNETIC COUNTERPLATE BASIC MODEL \***

Standard version, rubber support



Designation	Description	Ident-No.	Dimensions
GEZE magnetic counter plate *	Standard version, rubber support	115954	55 x 55 x 18 mm

**MAGNETIC COUNTERPLATE SPRING BUFFER \***

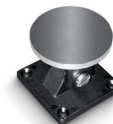
Version with spring buffer



Designation	Description	Ident-No.	Dimensions
GEZE magnetic counter plate *	Version with spring buffer	115955	55 x 55 x 79 mm

**TS 5000 SoftClose R-ISM/G \*****MAGNETIC COUNTERPLATE JOINT \***

Version with adjustable joint



Designation	Description	Ident-No.	Dimensions
GEZE magnetic counter plate *	Version with adjustable joint	115956	55 x 55 x 50 mm

**HOLD-OPEN MAGNET BASIC MODEL \***

With screw attachment on the rear and without mounting plate



Designation	Description	Ident-No.	Dimensions	Type of installation	IP rating
GEZE door hold-open magnet *	Basic model, without mounting plate, screw fixture on the back	115830	50 x 50 x 30 mm	Surface-mounted, Integrated	IP65

**HOLD-OPEN MAGNET FLEXIBLE 185 MM \***

For wall or ceiling installation with stand pipe 185 mm



Designation	Description	Ident-No.	Dimensions	Type of installation	IP rating
GEZE door hold-open magnet *	Wall/ceiling mounting, standpipe 185 m, flexible up to 110 mm, easy to shorten, magnetic head bendable through 90°	115952	90 x 80 x 185 mm	Wall, Ceiling, Floor	IP65 Magnet; IP20 connection

**TS 5000 SoftClose R-ISM/G \*****HOLD-OPEN MAGNET FLEXIBLE 335 MM \***

For wall or ceiling installation with stand pipe 335 mm



Designation	Description	Ident-No.	Dimensions	Type of installation	IP rating
GEZE door hold-open magnet *	Wall/ceiling mounting, standpipe 335 mm, flexible up to 110mm, easy to shorten, magnetic head bendable through 90°	115953	90 x 80 x 335 mm	Wall, Ceiling, Floor	IP65 Magnet; IP20 connection

**HOLD-OPEN MAGNET WALL INSTALLATION**

For wall installation with base plate



Designation	Description	Ident-No.	Dimensions	Type of installation	IP rating
GEZE door hold-open magnet	Wall mounting, with base plate	115829	93 x 65 x 33 mm	Surface-mounted	IP65 Magnet; IP20 connection

**HOLD-OPEN MAGNET WALL INSTALLATION 65 MM \***

For wall installation with base 65 mm



Designation	Description	Ident-No.	Dimensions	Type of installation	IP rating
GEZE door hold-open magnet *	Wall mounting with base 65 mm	155573	70 x 70 x 65 mm	Wall	IP65 Magnet; IP20 connection



### HOLD-OPEN MAGNET WALL INSTALLATION SURFACE-MOUNTED \*

For wall installation surface mounting or floor mounting with accessories and base



Designation	Description	Ident-No.	Dimensions	Type of installation	IP rating
GEZE door hold-open magnet *	Wall mounting surface mounting or floor mounting with base accessories (not included in scope of delivery)	155569	110 x 85 x 40 mm	Surface-mounted, Floor	IP65 Magnet; IP20 connection

### HOLD-OPEN MAGNET WALL INSTALLATION FLUSH-MOUNTED \*

For wall installation flush-mounted



Designation	Description	Ident-No.	Dimensions	Type of installation	IP rating
GEZE door hold-open magnet *	Flush-mounted wall mounting	155567	85 x 85 x 30 mm	Flush-mounted installation	IP65 Magnet; IP20 connection

### FLEXIBLE OPENING RESTRICTOR

For E and R guide rails, 1- and 2-leaf



Designation	Description	Ident-No.	Material
Flexible opening restrictor	for guide rail 1-leaf: TS 5000 E/R/RFS (door leaf installation), Boxer E; 2-leaf: all E/R/ISM variants TS 5000 (incl. VPK) and Boxer	145311	Plastic

# TS 5000 SoftClose R-ISM/G \*



## WIRELESS KIT FA GC 170

Set comprising GC 171 wireless module and GC 172 wireless ceiling-mounted smoke detector



Designation	Description	Ident-No.
GEZE FA GC 170 wireless KIT *	Set consisting of: 1 piece GC 171 wireless module for the wireless extension of GEZE hold-open systems and 2 pieces GC 172 wireless ceiling-mounted smoke detectors	195524

## GC 171 \*

Radio module for wireless connection of wireless components to GEZE hold-open systems



Designation	Description	Ident-No.	Colour	Supply voltage	Dimensions
GEZE GC 171 wireless module *	for the wireless connection of wireless components (GC 172 wireless smoke detector; GC 173 wireless thermal detector; GC 175 wireless input module) on GEZE hold-open systems.	163051	anthracite	24 V DC	177 x 30 x 18 mm

## GC 175 \*

Radio input module for wireless connection of manual trigger switches to the GC 171 wireless module



Designation	Description	Ident-No.	Colour	Supply voltage	Dimensions
GEZE GC 175 wireless input module *	for the wireless connection of manual trigger switches to the GEZE GC 171 wireless module, applicable for all GEZE hold-open systems	163068	black	3 V DC	52 x 52 x 32 mm

**GC 152 \***

Smoke detector for GEZE hold-open systems



Designation	Description	Ident-No.	Colour	Supply voltage	Type of installation
GEZE smoke detector GC 152 *	Complete with base, 24 V DC, 20 mA, tested in accordance with EN 54-7, with general approval for use with all GEZE hold-open systems FA GC 150, integrated line monitoring, conform with DIN EN 14637	139850	white RAL 9010	24 V DC	Ceiling

**AS 500**

Manual trigger switch for the manual release of electrically controlled hold-open devices



Designation	Description	Ident-No.	Colour	Dimensions	Operating voltage
AS 500 manual trigger switch	for the manual release of electrically controlled hold-open devices including terminating resistor for line monitoring	116266	alpine white/red	80 x 80 x 9 mm	24 V DC
AS 500 manual trigger switch, glass	for the manual release of electrically controlled hold-open devices including terminating resistor for line monitoring, glass pane and 5 interchangeable labels	120880	alpine white/red	80 x 80 x 21 mm	24 V DC

**GC 153 \***

Thermal detector for GEZE hold-open systems



Designation	Description	Ident-No.	Colour	Supply voltage	Type of installation
GEZE thermal detector GC 153 *	Complete with base, 24 V DC, 20 mA, tested in accordance with EN 54-5, with general approval for use with all GEZE hold-open systems FA GC 150, integrated line monitoring, conform with DIN EN 14637	139881	white	24 V DC	Ceiling

**INSTALLATION MATERIAL****MOUNTING PLATE GUIDE RAIL \***

For R-ISM guide rail



Designation	Description	Ident-No.	Colour	Type	Material
Mounting plate guide rail *	For R-ISM guide rail	118690	silver-coloured		Aluminum
Mounting plate guide rail *	For R-ISM guide rail	118701	according to RAL		Aluminum

**MOUNTING PLATE DOOR CLOSER**

For TS 5000 and TS 4000 with hole pattern in accordance with DIN EN 1154 Supplement 1



Designation	Description	Ident-No.	Colour	Dimensions	Material
Mounting plate door closer	for TS 5000/TS 4000 with hole pattern according to DIN EN 1154 Supplement 1	068627	white RAL 9016		Aluminum
Mounting plate door closer *	for TS 5000/TS 4000 with hole pattern according to DIN EN 1154 Supplement 1	057956	Galvanised		Aluminum
Mounting plate door closer	for TS 5000/TS 4000 with hole pattern according to DIN EN 1154 Supplement 1	029176	according to RAL		Aluminum
Mounting plate door closer	for TS 5000/TS 4000 with hole pattern according to DIN EN 1154 Supplement 1	049185	silver-coloured		Aluminum
Mounting plate door closer	for TS 5000/TS 4000 with hole pattern according to DIN EN 1154 Supplement 1	137725	Stainless steel optic		Aluminum
Mounting plate door closer	for TS 5000/TS 4000 with hole pattern according to DIN EN 1154 Supplement 1	052351	dark bronze		Aluminum

# TS 5000 SoftClose R-ISM/G \*



## MOUNTING PLATE DOOR CLOSER \*

For TS 5000 and TS 4000 with hole pattern in accordance with DIN EN 1154 Supplement 1



Designation	Description	Ident-No.	Material
Mounting plate *	for TS 5000/TS 4000 with hole pattern according to DIN EN 1154 Supplement 1	083992	Aluminum

\* The products designated above may vary in form, type, characteristics, function, or availability depending on the country. Please get in touch with your GEZE contact person if you have any questions.