

## GEZE wireless programme 230 V window drives

EN Installation and service instructions

132673-06



## 1 Safety notices

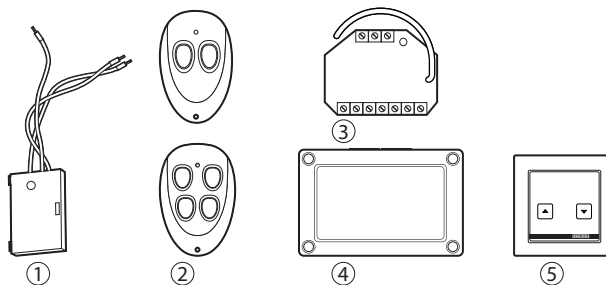
It is important to follow these instructions for the safety of persons. These instructions must be kept.

- Before installation, read and observe the enclosed safety notes. Warranty claims require proper mounting, installation and maintenance in accordance with the manufacturer's specifications.
- Only appropriately qualified people may carry out installation, commissioning and maintenance. Unauthorised modifications to the system release GEZE from liability for any resulting damages.
- Ensure that only a trained electrician completes the connection to the mains voltage. The power connection and protective earth connection test must be carried out in accordance DIN VDE 0100-610.
- Only use GEZE original parts for repair and service work.
- Observe the latest versions of guidelines, standards and country-specific regulations.
- Protect the components of the GEZE wireless program 230 V window drives from construction dirt and water.

## 2 Intended use

The GEZE wireless program 230 V window drives is used for activating GEZE 230 V window drives. Wire-bound switches and push buttons can be added or replaced.

## 3 Wireless program 230 V window drives



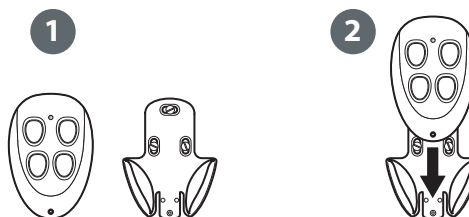
- 1 Transmitting module WTM (Id. No. 131212)
- 2 Remote control WTH-2 (ID no. 131210)  
Remote control WTH-4 (ID no. 131211)
- 3 Receiving module WRM-230 (ID no. 131215)
- 4 Receiving module WRM-230B (ID no. 131216)
- 5 Vent switch LTA-24-AZ, flush-mounted (Id. No. 129393)

## 4 Functional description

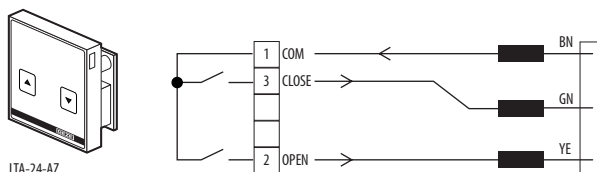
- 4.1 "OPEN" / "CLOSE" command
  - ▶ In order to open or close windows press the correspondingly taught push button on the transmitter.
- 4.2 "STOP" command
  - ▶ In order to stop windows during opening or closing press the corresponding opposite button on the transmitter.

## 5 Mounting / connection

### 5.1 Connecting the radio transmitter

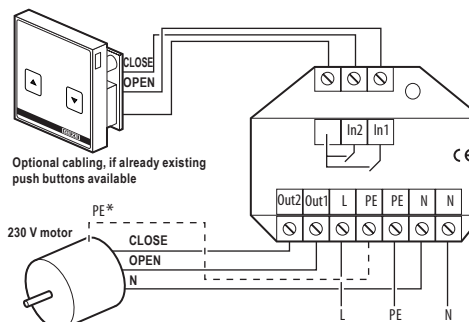


Remote control with wall holder

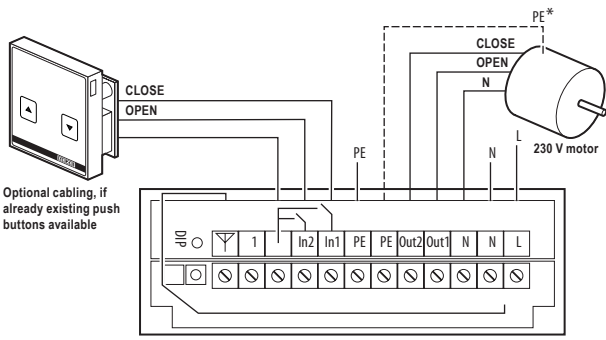


Connecting the radio transmitting module WTM to the vent switch LTA-24-AZ

### 5.2 Connecting the receiving module



Connecting the receiving module WRM-230 to the 230 V motor

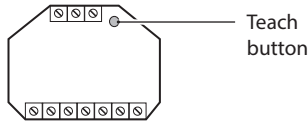


Connecting the receiving module WRM-230B to the 230 V motor

\* If PE connection necessary on the drive

### 5.3 Receiving module operating mode

**!** For safety reasons the operating mode is set at the receiving module WRM-230 via the teach button. The operating mode has to be set correctly before initial commissioning.



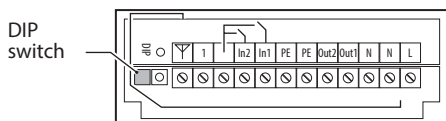
Teach button at the receiving module WRM-230

- ▶ Press the teach button at the receiving module for approx. 1 second.
  - The receiving module beeps 1x briefly every 3 seconds.
- ▶ Press the teach button again for approx. 1 second
  - The set operating mode is output acoustically:
  - The receiving module beeps 1x briefly every 3 seconds: Operation without latching.
  - The receiving module beeps 2x briefly every 3 seconds: Operation with latching.

**!** The permanent signal drops after 10 minutes.

- ▶ In order to change the operating mode press the teach button at the receiving module for approx. 1 second.
- ▶ In order to store the operating mode press the teach button at the receiving module for approx. 3 seconds.
  - The receiving module beeps 1x long as confirmation.
  - The operating mode at the receiving module has been taught successfully.

**!** The operating mode at the receiving module WRM-230B is set by means of the DIP switch that has to be set correctly before initial commissioning.



DIP switch at the receiving module WRM-230B

#### Operation without latching:

- Activation as long as the wireless key is kept pressed.



DIP1 = OFF  
DIP2 = ON

**!** Wireless signal drops after approx. 10 seconds.

#### Operation with latching:

- Activation triggers permanent signal for latching operation.



DIP1 = ON  
DIP2 = ON

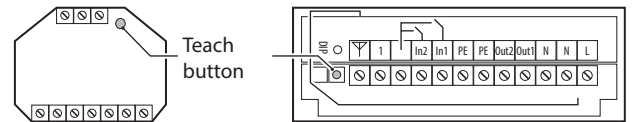
**!** The permanent signal drops after 10 minutes.

## 6 Commissioning

### 6.1 Teaching radio transmitters

**!** Set DIP switch (WRM-230B) before teach-in.

For safety reasons the radio transmitter can only be taught during the first 5 minutes after the operating voltage has been switched on at the drive.



Teach button on the receiving module WRM-230 and WRM-230B

Press the teach button on the receiving module for approx. 1 second in order to activate teach-in.

- The receiving module beeps 1x briefly every 3 seconds.
- The memory for the "OPEN" function is selected.
- ▶ Press the corresponding push button for "OPEN" on the radio transmitter briefly within 30 seconds.
  - The receiving module beeps 1x long as confirmation and then every 2x every 3 seconds.
  - The memory for the "CLOSE" function is selected.
- ▶ Press the corresponding push button for "CLOSE" on the radio transmitter briefly within 30 seconds.
  - The receiving module beeps 1x long as confirmation.
  - The receiving module has been taught successfully and terminates teaching mode automatically.

If further radio transmitters are to be taught, repeat the steps. A maximum of 85 radio transmitters can be taught per receiving module. If more than 85 radio transmitters are to be taught, additional receiving modules are to be connected.

### 6.2 Deleting radio transmitters

For safety reasons the radio transmitter can only be deleted during the first 5 minutes after the operating voltage has been switched on.

- ▶ Press the teach button at the receiving module for approx. 10 seconds.
  - The receiving module beeps 1x long as confirmation.
  - All the taught radio transmitters have been deleted successfully from the memory.

Taught radio transmitters can only be overwritten. If a taught radio transmitter is to be deleted, all the taught radio transmitters have to be deleted.

## 7 Maintenance / battery change

### 7.1 Remote control

The battery service life is designed for approx. 30 000 operations. When the battery power declines, the LED begins to flash during operation. The battery should then be replaced by a new battery A23/MN21/P23GA.

### 7.2 Transmitting module

The battery service life is designed for approx. 100 000 operations. When the battery power declines, the LED begins to flash during operation. The battery should then be replaced by a new CR 2032 battery.

## 8 Technical data

Frequency:	433.92 MHz
Transmission power:	<10 mW ERP
Range:	approx. 30 m
Security:	Rolling code
Power supply:	WTH: 12 V, Battery A23/MN21/P23GA, 50 mAh
	WTM: 3 V, CR 2032 battery, 220 mAh
	WRM-230: 230 V, 3.9 mA (current consumption during standby)
	WRM-230B: 230 V, 5.6 mA (current consumption during standby)
Relay contact:	WRM-230: 2 outputs 5 A, 230 V
	WRM-230B: 2 outputs 5 A, 230 V
Dimensions (W × H × D):	WTH: 78 × 51 × 23 mm
	WTM: 44 × 30 × 11 mm
	WRM-230: 52 × 47 × 23 mm
	WRM-230B: 130 × 80 × 35 mm
IP rating:	WTH: IP 54
	WTM: IP 20
	WRM-230 IP 20
	WRM-230B IP 54
Storage temperature:	-20 to +85 °C
Service temperature:	0 to +50 °C
Humidity:	max. 95%, non-condensing

## 9 Declaration of conformity



GEZE GmbH hereby declares that the wireless system type GEZE wireless program 230 V window drives complies with the Directives 2014/53/EU and 2011/65/EU. The complete text of the EU Declaration of Conformity is available at the following internet address: [www.geze.com](http://www.geze.com)



For EU countries: In compliance with Directive 2012/19/EU concerning Waste Electrical and Electronic Equipment (WEEE).

**Germany**

GEZE GmbH  
Niederlassung Süd-West  
Tel. +49 (0) 7152 203 594  
E-Mail: leonberg.de@geze.com

GEZE GmbH  
Niederlassung Süd-Ost  
Tel. +49 (0) 7152 203 6440  
E-Mail: muenchen.de@geze.com

GEZE GmbH  
Niederlassung Ost  
Tel. +49 (0) 7152 203 6840  
E-Mail: berlin.de@geze.com

GEZE GmbH  
Niederlassung Mitte/Luxemburg  
Tel. +49 (0) 7152 203 6888  
E-Mail: frankfurt.de@geze.com

GEZE GmbH  
Niederlassung West  
Tel. +49 (0) 7152 203 6770  
E-Mail: duesseldorf.de@geze.com

GEZE GmbH  
Niederlassung Nord  
Tel. +49 (0) 7152 203 6600  
E-Mail: hamburg.de@geze.com

GEZE Service GmbH  
Tel. +49 (0) 1802 923392  
E-Mail: service-info.de@geze.com

**Austria**

GEZE Austria  
E-Mail: austria.at@geze.com  
www.geze.at

**Benelux**

GEZE Benelux B.V.  
E-Mail: benelux.nl@geze.com  
www.geze.be  
www.geze.nl

**Bulgaria**

GEZE Bulgaria - Trade  
E-Mail: office-bulgaria@geze.com  
www.geze.bg

**China**

GEZE Industries (Tianjin) Co., Ltd.  
E-Mail: chinasales@geze.com.cn  
www.geze.com.cn

GEZE Industries (Tianjin) Co., Ltd.  
Branch Office Shanghai  
E-Mail: chinasales@geze.com.cn  
www.geze.com.cn

GEZE Industries (Tianjin) Co., Ltd.  
Branch Office Guangzhou  
E-Mail: chinasales@geze.com.cn  
www.geze.com.cn

GEZE Industries (Tianjin) Co., Ltd.  
Branch Office Beijing  
E-Mail: chinasales@geze.com.cn  
www.geze.com.cn

**France**

GEZE France S.A.R.L.  
E-Mail: france.fr@geze.com  
www.geze.fr

**Hungary**

GEZE Hungary Kft.  
E-Mail: office-hungary@geze.com  
www.geze.hu

**Iberia**

GEZE Iberia S.R.L.  
E-Mail: info.es@geze.com  
www.geze.es

**India**

GEZE India Private Ltd.  
E-Mail: office-india@geze.com  
www.geze.in

**Italy**

GEZE Italia S.r.l  
E-Mail: italia.it@geze.com  
www.geze.it

GEZE Engineering Roma S.r.l  
E-Mail: italia.it@geze.com  
www.geze.it

**Korea**

GEZE Korea Ltd.  
E-Mail: info.kr@geze.com  
www.geze.com

**Poland**

GEZE Polska Sp.z o.o.  
E-Mail: geze.pl@geze.com  
www.geze.pl

**Romania**

GEZE Romania S.R.L.  
E-Mail: office-romania@geze.com  
www.geze.ro

**Russia**

OOO GEZE RUS  
E-Mail: office-russia@geze.com  
www.geze.ru

**Scandinavia – Estonia**

GEZE Scandinavia AB eesti filial  
E-Mail: estonia@geze.com  
www.geze.ee

**Scandinavia – Finland**

GEZE Scandinavia AB Filial Finland  
E-Mail: finland@geze.com  
www.geze.fi

**Scandinavia – Latvia**

GEZE Scandinavia AB Latvijas filiāle  
E-Mail: latvia@geze.com  
www.geze.lv

**Scandinavia – Lithuania**

GEZE Scandinavia AB Filial Lietu.  
E-Mail: lithuania@geze.com  
www.geze.lt

**Scandinavia – Sweden**

GEZE Scandinavia AB  
E-Mail: sverige.se@geze.com  
www.geze.se

**Scandinavia – Norway**

GEZE Scandinavia AB avd. Norge  
E-Mail: norge.se@geze.com  
www.geze.no

**Scandinavia – Denmark**

GEZE Danmark  
E-Mail: danmark.se@geze.com  
www.geze.dk

**Singapore**

GEZE (Asia Pacific) Pte, Ltd.  
E-Mail: gezessea@geze.com.sg  
www.geze.com

**South Africa**

GEZE South Africa (Pty) Ltd.  
E-Mail: info@gezesa.co.za  
www.geze.co.za

**Switzerland**

GEZE Schweiz AG  
E-Mail: schweiz.ch@geze.com  
www.geze.ch

**Türkiye**

GEZE Kapi ve Pencere Sistemleri  
E-Mail: office-turkey@geze.com  
www.geze.com

**Ukraine**

LLC GEZE Ukraine  
E-Mail: office-ukraine@geze.com  
www.geze.ua

**United Arab Emirates/GCC**

GEZE Middle East  
E-Mail: gezeme@geze.com  
www.geze.ae

**United Kingdom**

GEZE UK Ltd.  
E-Mail: info.uk@geze.com  
www.geze.com

**GEZE GmbH**

Reinhold-Vöster-Straße 21–29 Tel.: 0049 7152 203 0

71229 Leonberg Fax: 0049 7152 203 310

Germany

www.geze.com

