

Product data sheet

Levolan 120 glass with fanlight



Sliding door fitting for 120 kg glass leafs and fanlight
attachment

Levolan 120 glass with fanlight



AREAS OF APPLICATION

- For design-oriented interior sliding doors for living and office areas
- For all single- and multiple-leaf sliding doors
- Attachment directly to glass
- For attachment on the wall and ceiling (directly and concealed) as well as for glass installation
- Damped on one or both sides with Levolan 120 SoftStop
- Smooth running with Levolan 120 SoftStop makes it particularly well suited for doors in living and office spaces

PRODUCT FEATURES

- Sliding door fitting for glass doors up to 120 kg leaf weight and direct attachment to glass walls or fanlights
- With damping on one or both sides, for doors up to 120 kg leaf weight so that the door is stopped gently and pulled autonomously into the end position
- Small floor and side profiles create a generous clearance gauge for fixed panels and glass sliding doors
- Fixed glass panels can be installed quickly and easily with rubber seals
- Modular fixed panel option as an "add-on" for the basic hardware

TECHNICAL DATA

Productname	Levolan 120 glass with fanlight
-------------	---------------------------------

PART

LEVOLAN 120 COMPLETE SET

Levolan sliding door fitting for leaf weights up to 120 kg



Designation	Description	Ident-No.	Colour	Dimensions	Leaf width (min.)
Levolan 120 complete set	For wall and ceiling installation	157943	Stainless steel optic	2450 mm	640 mm
Levolan 120 complete set	For wall and ceiling installation	157940	EV1	2850 mm	640 mm
Levolan 120 complete set	For wall and ceiling installation	157944	Stainless steel optic	2850 mm	640 mm
Levolan 120 complete set	For wall and ceiling installation	157939	EV1	2450 mm	640 mm

Levolan 120 glass with fanlight



ACCESSORIES

LEVOLAN 120 SOFTSTOP SET, DAMPED ON ONE SIDE, UP TO 120 KG

Levolan SoftStop one-sided draw-in damping left-hand version



Designation	Description	Ident-No.	Leaf width (min.)	Leaf width (max.)
Levolan 120 SoftStop set, damped on one side, up to 120 kg	for draw-in damping left, consisting of: 1 x damping unit, 2 x spacers for cover panel bracket, 1 x trigger, can also be retrofitted - minimum leaf width on one side 900 mm, on both sides 1,325 mm	157999	900 mm	1440 mm

HANDLE RING, GLASS *

Stainless steel operating device for all-glass door leaes



Designation	Description	Ident-No.	Colour	Dimensions	Glass thickness
Handle ring, glass	Handle ring for glass thickness 10 - 12 mm, 58 mm outer diameter	169811	Satin stainless steel	26 mm	10 - 12 mm

PULL HANDLE D-SHAPE

Stainless steel pull handle pair



Designation	Description	Ident-No.	Colour	Glass thickness	Type of installation
Pull handle D-shape	Pull handle set for door thicknesses up to 50 mm and 10-12 mm glass thickness (set) - diameter: 22 mm; hole spacing: 300 mm	169819	Satin stainless steel	10 - 12 mm	Door leaf installation, Glass installation
Pull handle D-shape	Pull handle set for door thicknesses up to 50 mm and 10-12 mm glass thickness (set) - diameter: 19 mm; hole spacing: 200 mm	169818	Satin stainless steel	10 - 12 mm	Door leaf installation, Glass installation
Pull handle D-shape	Pull handle set for door thicknesses up to 50 mm and 10-12 mm glass thickness (set) - diameter: 19 mm; hole spacing: 150 mm	169817	Satin stainless steel	10 - 12 mm	Door leaf installation, Glass installation
Pull handle D-shape	Pull handle set for door thicknesses up to 50 mm and 10-12 mm glass thickness (set) - diameter: 25 mm; hole spacing: 300 mm	169820	Satin stainless steel	10 - 12 mm	Door leaf installation, Glass installation

Levolan 120 glass with fanlight



PULL HANDLE H-SHAPE

Stainless steel pull handle pair



Designation	Description	Ident-No.	Colour	Glass thickness	Type of installation
Pull handle H-shape	Pull handle set for door thicknesses up to 50 mm and 10-12 mm glass thickness (set) - diameter: 25 mm; hole spacing: 300 mm; total length: 400 mm	169822	Satin stainless steel	10 - 12 mm	Door leaf installation, Glass installation
Pull handle H-shape	Pull handle set for door thicknesses up to 50 mm and 10-12 mm glass thickness (set) - diameter: 25 mm; hole spacing: 250 mm; total length: 350 mm	169821	Satin stainless steel	10 - 12 mm	Door leaf installation, Glass installation
Pull handle H-shape	Pull handle set for door thicknesses up to 50 mm and 10-12 mm glass thickness (set) - diameter: 32 mm; hole spacing: 600 mm; total length: 800 mm	169823	Satin stainless steel	10 - 12 mm	Door leaf installation, Glass installation
Pull handle H-shape	Pull handle set for door thicknesses up to 50 mm and 10-12 mm glass thickness (set) - diameter: 32 mm; hole spacing: 1200 mm; total length: 1400 mm	169824	Satin stainless steel	10 - 12 mm	Door leaf installation, Glass installation

FLOOR GUIDE FOR WOODEN LEAF

Floor guide for wooden leaves mounted on the floor



Designation	Description	Ident-No.	Colour
Floor guide for timber leaf standard	Without attachment material	002191	Galvanised

CLAMPING PROFILE FOR ATTACHING WOODEN / METAL LEAVES

Clamping profile for connecting timber leaves and Levolan 60/120 roller carriage



Designation	Description	Ident-No.	Colour	Dimensions
Clamping profile for attaching wooden / metal leaves	for the attachment of door leaves made of wood / metal / plastic to Levolan 60 / 120	146958	EV1	1500 mm
Clamping profile for attaching wooden / metal leaves	for the attachment of door leaves made of wood / metal / plastic to Levolan 60 / 120	146957	EV1	1000 mm
Clamping profile for attaching wooden / metal leaves	Bespoke	146959	EV1	

Levolan 120 glass with fanlight



LEVOLAN SOFTSTOPDUO SET, DAMPED ON BOTH SIDES, UP TO 100 KG

Levolan SoftStopDuo draw-in damping on both sides for leaf weights up to 100 kg



Designation	Description	Ident-No.	Leaf width (min.)	Leaf width (max.)
Levolan SoftStopDuo set, damped on both sides, up to 100 kg	for draw-in damping left & right, consisting of; 1 x double damping unit, 2 x spacers - Levolan 60 and 2 x spacers - Levolan 120 for cover panel bracket, 2 x adjustable triggers, can also be retrofitted - for Levolan 60 minimum leaf width 770 mm, for Levolan 120 minimum leaf width 1010 mm	146402	770 mm	1240 mm

FLUSH PULL, ANGULAR *

Stainless steel shell in rectangular design 128 x 82 mm



Designation	Description	Ident-No.	Colour	Dimensions	Type of installation
Flush pull, angular	Stainless steel shell in rectangular design 128 x 82 mm	169808	Satin stainless steel	128 x 82 x 20 mm	Door leaf installation

FLUSH PULL, OVAL *

Stainless steel shell in oval design 40 x 120 mm



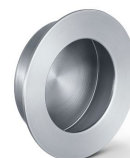
Designation	Description	Ident-No.	Colour	Dimensions	Type of installation
Flush pull, oval	Stainless steel shell in oval design 40 x 120 mm	169809	Satin stainless steel	120 x 40 x 14.5 mm	Door leaf installation

Levolan 120 glass with fanlight



FLUSH PULL, ROUND *

Stainless steel shell in round design, 65 mm diameter



Designation	Description	Ident-No.	Colour	Dimensions	Type of installation
Flush pull, round	Stainless steel shell in round design, 65 mm diameter	169810	Satin stainless steel	16 mm	Door leaf installation

FLOOR GUIDE SET GLASS GUIDE

Floor guide for glass sliding leaves for glass thickness 8, 10 and 12 mm



Designation	Description	Ident-No.	Colour	Glass thickness
Floor guide for glass leaf (stainless steel)	For 8, 10, 12 mm glass	134990	Stainless steel	8 - 12 mm

* The products designated above may vary in form, type, characteristics, function, or availability depending on the country. Please get in touch with your GEZE contact person if you have any questions.