

# Product data sheet

## ECturn



Electromechanical swing door drive for accessible single leaf doors weighing up to 125 kg

### AREAS OF APPLICATION

- Single-action, single leaf, right and left closing doors
- Single-action doors up to 1100 mm leaf width or 125 kg weight
- Entrance and interior doors with moderate access frequency
- Automation of frameless all-glass doors
- Door leaf installation and transom installation
- Barrier-free access

**PRODUCT FEATURES**

- Opening and closing speed can be individually adjusted
- Electrical latching action which accelerates the door shortly before the closed position
- Low-energy function opens and closes the door with reduced speed, fulfilling the highest safety demands
- Obstacle detection detects an object through contact and stops the opening or closing process
- Automatic reversing detects an obstacle and returns to the opening position
- Push & Go function triggers the automatic drive following light manual pressure on the door leaf
- Drive can be used with guide rail or link arm
- Glass guide rail available for use on glass doors with a glass thickness of 8-10 mm
- Optional rechargeable battery provides maximum safety during a power failure
- Optional radio reception board for wireless activation by radio transmitter

**TECHNICAL DATA**

|   |                          |
|---|--------------------------|
| Productname   | ECturn                   |
| Leaf weight (max.) 1-leaf   | 125 kg                   |
| Leaf width (min.-max.)  | 650 mm - 1100 mm         |
| Reveal depth (max.)   | 200 mm                   |
| Door overlap (max.)   | 50 mm                    |
| Drive type  | Electromechanical        |
| Opening angle (max.)  | 110 °                    |
| DIN left  | Yes                      |
| DIN right   | Yes                      |
| Transom installation opposite hinge side with link arm            | Yes                      |
| Transom installation opposite hinge side with roller guide rail   | Yes                      |
| Transom installation hinge side with roller guide rail            | Yes                      |
| Door leaf installation opposite hinge side with roller guide rail | Yes                      |
| Door leaf installation hinge side with roller guide rail          | Yes                      |
| Door leaf installation hinge side with link arm                   | Yes                      |
| Mechanical latching action  | No                       |
| Electrical latching action  | Yes                      |
| Disconnection from mains  | Main switch in the drive |
| Activation delay (max.)   | 20 s                     |
| Power rating  | 75 W                     |
| Power supply for external consumers (24 V DC)                     | 600 mA                   |
| Service temperature   | -15 - 50 °C              |
| Air humidity non-condensing (max.)                                | 95 %                     |
| IP rating   | IP20                     |

|                         |  |
|-------------------------|--|
| Mode of operation       | Automatic, Permanently open, Night, Off                        |
| Automatic function      | Yes  |
| Low-energy function     | Yes  |
| function smart swing    | No   |
| Servo function          | No   |
| Obstacle detection      | Yes  |
| Automatic reversing     | Yes  |
| Push & Go               | adjustable   |
| Operation               | Programme switch integrated in the drive, Programme switch TPS |
| Parameter setting       | Control unit, Programme switch DPS                             |
| Standard conformity     | EN 16005   |
| Smoke switch integrated | No   |

**PART****ECTURN**

Electromechanical swing door drive for accessible single leaf doors weighing up to 125 kg



| Designation | Description   | Ident-No. | Supply voltage | Dimensions       | Leaf width (min.) |
|-------------|---|-----------|----------------|------------------|-------------------|
| ECturn      | Electromechanical swing door drive for 1-leaf single-action doors | 134536    | 110 - 230 V    | 580 x 60 x 60 mm | 650 mm            |

**LINK ARM ECTURN**

For transom installation on opposite hinge side or door leaf installation on hinge side for reveal depths of 0 - 200 mm



| Designation       | Description                | Ident-No. | Colour           |
|-------------------|----------------------------|-----------|------------------|
| Link arm ECturn   | for reveal depth 90-200 mm | 134664    | silver-coloured  |
| Link arm ECturn   | for reveal depth 0-100 mm  | 134663    | silver-coloured  |
| Link arm ECturn * | for reveal depth 90-200 mm | 135933    | according to RAL |
| Link arm ECturn   | for reveal depth 0-100 mm  | 135932    | according to RAL |

## COVER ECTURN

For the ECturn swing door drive



| Designation  | Ident-No. | Colour           | Dimensions         |
|--------------|-----------|------------------|--------------------|
| Cover ECturn | 133196    | EV1              | 572.5 x 60 x 60 mm |
| Cover ECturn | 134291    | according to RAL | 572.5 x 60 x 60 mm |

## GUIDE RAIL ECTURN

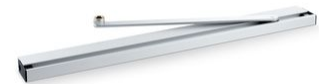
For opposite hinge side



| Designation             | Description             | Ident-No. | Colour           | Dimensions  |
|-------------------------|-------------------------|-----------|------------------|-------------|
| Guide rail ECturn       | For opposite hinge side | 135971    | according to RAL | 485 x 20 mm |
| Glass guide rail ECturn | For opposite hinge side | 145587    | according to RAL | 485 x 20 mm |
| Glass guide rail ECturn | For opposite hinge side | 140115    | EV1              | 485 x 20 mm |
| Guide rail ECturn *     | For opposite hinge side | 135970    | white RAL 9016   | 485 x 20 mm |
| Guide rail ECturn       | For opposite hinge side | 135969    | EV1              | 485 x 20 mm |

## GUIDE RAIL ECTURN

For hinge side



| Designation             | Description   | Ident-No. | Colour           | Dimensions  |
|-------------------------|---|-----------|------------------|-------------|
| Glass guide rail ECturn | For hinge side  | 140114    | EV1              | 415 x 20 mm |
| Guide rail ECturn       | For hinge side  | 135119    | according to RAL | 415 x 20 mm |
| Guide rail ECturn       | available with spindle extension from 6 to 26 mm (only suitable for installation on the hinge side) | 134073    |                  | 415 x 20 mm |
| Guide rail ECturn *     | For hinge side  | 135118    | white RAL 9016   | 415 x 20 mm |
| Guide rail ECturn       | For hinge side  | 135117    | EV1              | 415 x 20 mm |
| Glass guide rail ECturn | For hinge side  | 145586    | according to RAL | 415 x 20 mm |

## MOUNTING PLATE ECTURN

For installing the drive on the frame or the door leaf



| Designation           | Ident-No. | Colour           | Dimensions      |
|-----------------------|-----------|------------------|-----------------|
| Mounting plate Ecturn | 133454    | according to RAL | 580 x 60 x 5 mm |
| Mounting plate Ecturn | 133452    | silver-coloured  | 580 x 60 x 5 mm |

## ACCESSORIES

### RECHARGEABLE BATTERY ECTURN

Operation safeguarded in the event of a power failure



| Designation                 | Ident-No. |
|-----------------------------|-----------|
| Rechargeable battery Ecturn | 131473    |

### GC 338

Sensor strip with standby mode for the protection of automatic swing and revolving doors



| Designation                          | Description  | Ident-No. | Colour           | Dimensions   | Output                       |
|--------------------------------------|--|-----------|------------------|--------------|------------------------------|
| GC 338 Pair of sensor strips 1200 mm | consisting of two complete sensor strips for protection of the swivelling range of automatic swing and revolving doors in accordance with DIN 18650 / EN 16005 | 142825    | according to RAL | 1200 x 42 mm | Electrical relay             |
| GC 338 Pair of sensor strips 1500 mm | consisting of two complete sensor strips for protection of the swivelling range of automatic swing and revolving doors in accordance with DIN 18650 / EN 16005 | 142827    | according to RAL | 1500 x 42 mm | Potential-free relay contact |
| GC 338 Pair of sensor strips 1500 mm | consisting of two complete sensor strips for protection of the swivelling range of automatic swing and revolving doors in accordance with DIN 18650 / EN 16005 | 142757    | EV1              | 42 mm        | Electrical relay             |
| GC 338 Pair of sensor strips 1200 mm | consisting of two complete sensor strips for protection of the swivelling range of automatic swing and revolving doors in accordance with DIN 18650 / EN 16005 | 142219    | EV1              | 1200 x 42 mm | Electrical relay             |

### KFT ELBOW SWITCH

Plastic elbow switch, IP rating IP20, for activation of automatic doors



| Designation      | Description                      | Ident-No. | Colour                 | Dimensions       | Type of installation |
|------------------|----------------------------------|-----------|------------------------|------------------|----------------------|
| KFT elbow switch | Very flat design, IP rating IP20 | 114077    | stainless steel colour | 90 x 179 x 23 mm | Surface-mounted      |
| KFT elbow switch | Very flat design, IP rating IP20 | 114078    | white                  | 90 x 179 x 23 mm | Surface-mounted      |

### LS 990 ELBOW SWITCH

Elbow switch for activating automatic doors



| Designation         | Description            | Ident-No. | Colour          | Dimensions       | Type of installation       |
|---------------------|------------------------|-----------|-----------------|------------------|----------------------------|
| LS 990 elbow switch | IP rating IP30 H=223mm | 128583    | Stainless steel | 81 x 223 x 18 mm | Flush-mounted installation |
| LS 990 elbow switch | IP rating IP30 H=223mm | 128582    | Stainless steel | 81 x 223 x 51 mm | Surface-mounted            |
| LS 990 elbow switch | IP rating IP30 H=223mm | 141041    | alpine white    | 81 x 223 x 51 mm | Surface-mounted            |
| LS 990 elbow switch | IP rating IP30 H=223mm | 141042    | alpine white    | 81 x 223 x 18 mm | Flush-mounted installation |

### LED SENSOR SWITCH \*

Switch for activating automatic doors



| Designation               | Description   | Ident-No. | Colour | Dimensions        | Output                |
|---------------------------|---|-----------|--------|-------------------|-----------------------|
| LED sensor switch *       | Capacitive push button with blue LED lighting and haptic Braille lettering for activating automatic door systems. Protection rating IP69K | 137529    | black  | 100 x 100 x 10 mm | PNP transistor output |
| LED sensor switch glass * | Capacitive push button with blue LED lighting for activating automatic door systems. Protection rating IP69K                              | 143412    | white  | 100 x 100 x 8 mm  | PNP transistor output |

### GC 335

Sensor strip with high safety standard for protecting automatic swing and revolving doors



| Designation                 | Description   | Ident-No. | Colour           | Dimensions        | Output                       |
|-----------------------------|---|-----------|------------------|-------------------|------------------------------|
| GC 335 Sensor strip 1400 mm | Protection of the swivelling range of automatic swing and revolving doors in accordance with DIN 18650 / EN 16005 / With one master module and end caps | 128071    | according to RAL | 1400 x 42 x 37 mm | Potential-free relay contact |
| GC 335 Sensor strip 310 mm  | Protection of the swivelling range of automatic swing and revolving doors in accordance with DIN 18650 / EN 16005 / With one master module and end caps | 129856    | EV1              | 310 x 42 x 37 mm  | Potential-free relay contact |
| GC 335 Sensor strip 1400 mm | Protection of the swivelling range of automatic swing and revolving doors in accordance with DIN 18650 / EN 16005 / With one master module and end caps | 128060    | white RAL 9016   | 1400 x 42 x 37 mm | Potential-free relay contact |
| GC 335 Sensor strip 900 mm  | Protection of the swivelling range of automatic swing and revolving doors in accordance with DIN 18650 / EN 16005 / With one master module and end caps | 128057    | according to RAL | 900 x 42 x 37 mm  | Potential-free relay contact |
| GC 335 Sensor strip 1400 mm | Protection of the swivelling range of automatic swing and revolving doors in accordance with DIN 18650 / EN 16005 / With one master module and end caps | 128058    | EV1              | 1400 x 42 x 37 mm | Potential-free relay contact |
| GC 335 Sensor strip 310 mm  | Protection of the swivelling range of automatic swing and revolving doors in accordance with DIN 18650 / EN 16005 / With one master module and end caps | 129859    | according to RAL | 310 x 42 x 37 mm  | Potential-free relay contact |
| GC 335 Sensor strip 900 mm  | Protection of the swivelling range of automatic swing and revolving doors in accordance with DIN 18650 / EN 16005 / With one master module and end caps | 128054    | EV1              | 900 x 42 x 37 mm  | Potential-free relay contact |

### WRB-5 \*

Radio reception board for Ecturn, Ecturn Inside and Powerturn swing door drives



| Designation                   | Description                             | Ident-No. | Dimensions      | Operating voltage | Type of installation                   |
|-------------------------------|---|-----------|-----------------|-------------------|--|
| WRB-5 radio reception board * | for Powerturn, Ecturn and Ecturn Inside | 135170    | 44 x 27 x 10 mm | 5 V DC            | can be plugged in to DCU control units |

**WTH \***

Remote control for activating GEZE automatic doors and window drives via the GEZE wireless programme



| Designation                      | Description                         | Ident-No. | Dimensions      | Operating voltage | Type of installation |
|----------------------------------|-------------------------------------|-----------|-----------------|-------------------|----------------------|
| WTH-2 remote control 2 channel * | with wall fixing and IP rating IP54 | 131210    | 78 x 51 x 15 mm | 12 V DC           | Wall                 |
| WTH-4 remote control 4 channel * | with wall fixing and IP rating IP54 | 131211    | 78 x 51 x 15 mm | 12 V DC           | Wall                 |
| WTH-1 remote control 1 channel * | with wall fixing and IP rating IP54 | 131209    | 78 x 51 x 15 mm | 12 V DC           | Wall                 |

**DOOR TRANSMISSION CABLE**

For door leaf installation



| Designation                    | Description | Ident-No. | Dimensions |
|--------------------------------|-------------|-----------|------------|
| Door transmission cable Ecturn |             | 135307    | 600 mm     |

**GC 302**

Radar movement detector for the activation of automatic doors



| Designation                      | Description   | Ident-No. | Colour           | Dimensions       | Output                       |
|----------------------------------|---|-----------|------------------|------------------|------------------------------|
| GC 302 R radar movement detector | Radar movement detector for the activation of automatic doors | 124087    | black            | 176 x 62 x 52 mm | Potential-free relay contact |
| GC 302 R radar movement detector | Radar movement detector for the activation of automatic doors | 124088    | according to RAL | 176 x 62 x 52 mm | Potential-free relay contact |



**GC 307+ \***

Non-contact proximity switch for activating automatic doors



| Designation           | Description  | Ident-No. | Colour       | Dimensions      | Type of installation       |
|-----------------------|--|-----------|--------------|-----------------|----------------------------|
| GC 307+ (hand icon) * | Proximity switch for the activation of / automatic doors   | 195727    | alpine white | 80 x 80 x 21 mm | Surface-mounted            |
| GC 307+ (WC icon) *   | Proximity switch for the activation of / automatic doors / Suitable for Powerturn, EMD, and standard sliding doors | 195751    | alpine white | 80 x 80 x 21 mm | Surface-mounted            |
| GC 307+ (hand icon) * | Proximity switch for the activation of / automatic doors   | 193226    | alpine white | 80 x 80 x 8 mm  | Flush-mounted installation |
| GC 307+ (WC icon) *   | Proximity switch for the activation of / automatic doors / Suitable for Powerturn, EMD, and standard sliding doors | 195750    | alpine white | 80 x 80 x 8 mm  | Flush-mounted installation |

**GC 342**

Laser scanner for the protection of automatic doors and windows with integrated object and wall blanking



| Designation           | Description  | Ident-No. | Colour                 | Dimensions       | Output                          |
|-----------------------|--|-----------|------------------------|------------------|---------------------------------|
| GC 342 (left module)  | Laser scanner with one laser curtain for protection of the swivelling range of automatic swing doors / consisting of sensor module, cable and accessories      | 167433    | white                  | 143 x 86 x 40 mm | 2 potential-free relay contacts |
| GC 342 (right module) | Laser scanner with one laser curtain for protection of the swivelling range of automatic swing doors / consisting of sensor module, cable and accessories      | 167435    | black                  | 143 x 86 x 40 mm | 2 potential-free relay contacts |
| GC 342 (left module)  | Laser scanner with one laser curtain for protection of the swivelling range of automatic swing doors / consisting of sensor module, cable and accessories      | 167434    | stainless steel colour | 143 x 86 x 40 mm | 2 potential-free relay contacts |
| GC 342 (left module)  | Laser scanner with one laser curtain for protection of the swivelling range of automatic swing doors / consisting of sensor module, cable and accessories      | 167432    | black                  | 143 x 86 x 40 mm | 2 potential-free relay contacts |
| GC 342 Kit            | Laser scanner with one laser curtain for protection of the swivelling range of automatic swing doors / consisting of two sensor modules, cable and accessories | 167439    | white                  | 143 x 86 x 40 mm | 2 potential-free relay contacts |
| GC 342 (right module) | Laser scanner with one laser curtain for protection of the swivelling range of automatic swing doors / consisting of sensor module, cable and accessories      | 167437    | stainless steel colour | 143 x 86 x 40 mm | 2 potential-free relay contacts |
| GC 342 Kit            | Laser scanner with one laser curtain for protection of the swivelling range of automatic swing doors / consisting of two sensor modules, cable and accessories | 167438    | black                  | 143 x 86 x 40 mm | 2 potential-free relay contacts |

| Designation           | Description  | Ident-No. | Colour                 | Dimensions       | Output                          |
|-----------------------|--|-----------|------------------------|------------------|---------------------------------|
| GC 342 (right module) | Laser scanner with one laser curtain for protection of the swivelling range of automatic swing doors / consisting of sensor module, cable and accessories      | 167436    | white                  | 143 x 86 x 40 mm | 2 potential-free relay contacts |
| GC 342 Kit            | Laser scanner with one laser curtain for protection of the swivelling range of automatic swing doors / consisting of two sensor modules, cable and accessories | 167440    | stainless steel colour | 143 x 86 x 40 mm | 2 potential-free relay contacts |

**GC 342+ \***

Laser scanner for the protection of automatic swing doors with integrated object and wall blanking



| Designation              | Description   | Ident-No. | Colour                 | Dimensions       | Output                          |
|--------------------------|---|-----------|------------------------|------------------|---------------------------------|
| GC 342+ (left module) *  | Laser scanner with four laser curtains for optimal protection of the hazardous areas - including the secondary closing edge - of automatic swing doors; additional output for non-contact activation / consisting of sensor module, cable and accessories | 198693    | stainless steel colour | 145 x 88 x 68 mm | 3 potential-free relay contacts |
| GC 342+ (left module) *  | Laser scanner with four laser curtains for optimal protection of the hazardous areas - including the secondary closing edge - of automatic swing doors; additional output for non-contact activation / consisting of sensor module, cable and accessories | 198669    | black                  | 145 x 88 x 68 mm | 3 potential-free relay contacts |
| GC 342+ (left module) *  | Laser scanner with four laser curtains for optimal protection of the hazardous areas - including the secondary closing edge - of automatic swing doors; additional output for non-contact activation / consisting of sensor module, cable and accessories | 198671    | white                  | 145 x 88 x 68 mm | 3 potential-free relay contacts |
| GC 342+ (right module) * | Laser scanner with four laser curtains for optimal protection of the hazardous areas - including the secondary closing edge - of automatic swing doors; additional output for non-contact activation / consisting of sensor module, cable and accessories | 198694    | stainless steel colour | 145 x 88 x 68 mm | 3 potential-free relay contacts |
| GC 342+ (right module) * | Laser scanner with four laser curtains for optimal protection of the hazardous areas - including the secondary closing edge - of automatic swing doors; additional output for non-contact activation / consisting of sensor module, cable and accessories | 198670    | black                  | 145 x 88 x 68 mm | 3 potential-free relay contacts |
| GC 342+ (right module) * | Laser scanner with four laser curtains for optimal protection of the hazardous areas - including the secondary closing edge - of automatic swing doors; additional output for non-contact activation / consisting of sensor module, cable and accessories | 198692    | white                  | 145 x 88 x 68 mm | 3 potential-free relay contacts |

### LED SENSOR FOOT SWITCH \*

Switch for activating automatic doors



| Designation              | Description   | Ident-No. | Colour          | Dimensions            | Output                |
|--------------------------|---|-----------|-----------------|-----------------------|-----------------------|
| LED sensor foot switch * | Capacitive push button for activating automatic door systems. Protection rating IP69K | 182936    | Stainless steel | 100 x 100 x 3 x 14 mm | PNP transistor output |

### AS 500 \*

AS emergency stop switch with glass pane and five interchangeable labels ("Nottaster öffnen", "Notschalter", "Emergency switch", "Tür schließen" and without text)



| Designation                  | Description  | Ident-No. | Colour           | Dimensions      | Type of installation       |
|------------------------------|--|-----------|------------------|-----------------|----------------------------|
| AS 500 emergency stop switch | Rocker control switch with glow lamp, glass pane and five exchangeable labels ("Emergency push button open", "Emergency push button", "Emergency switch", "Close door" and no lettering) | 120881    | alpine white/red | 80 x 80 x 21 mm | Flush-mounted installation |

### AIR 20

Active infrared light switch for monitoring the door handle of automatic swing doors



| Designation | Description  | Ident-No. | Colour | Dimensions      | Operating voltage |
|-------------|--|-----------|--------|-----------------|-------------------|
| AIR 20-Var  | Light switch for monitoring the door handle of automatic swing doors | 082689    | black  | 72 x 66 x 49 mm | 24 V              |

**EFT ELBOW SWITCH \***

Stainless steel elbow switch with IP65 IP rating for activating automatic doors



| Designation      | Description                       | Ident-No. | Colour          | Dimensions       | Type of installation |
|------------------|-----------------------------------|-----------|-----------------|------------------|----------------------|
| EFT elbow switch | Very flat design / IP rating IP65 | 119898    | Stainless steel | 75 x 250 x 17 mm | Surface-mounted      |

**MINI LED SENSOR SWITCH \***

Activation of all GEZE automatic doors



| Designation               | Description   | Ident-No. | Colour          | Dimensions          | Output                |
|---------------------------|---|-----------|-----------------|---------------------|-----------------------|
| LED sensor switch 20 mm * | Capacitive push button for activating automatic door systems. Protection rating IP69K | 143273    | Aluminium, matt | 28.5 x 28.5 x 21 mm | PNP transistor output |

**TPS**

Keypad programme switch for setting the mode of operation for automatic doors



| Designation                                    | Description   | Ident-No. | Colour       | Dimensions       | Operating voltage |
|--|---|-----------|--------------|------------------|-------------------|
| TPS keypad programme switch                    | with 2 control keys, LED display, coded fault display, IP rating IP40 / suitable for switch ranges with 55x55mm switch insert | 113231    | alpine white | 80 x 80 x 11 mm  | 24 V DC           |
| TPS keypad programme switch and SCT key switch | in combined double frame without Euro profile half cylinder   | 113232    | alpine white | 80 x 152 x 11 mm | 24 V DC           |

### AS 500 ROCKER PUSH BUTTON

Activation of all GEZE automatic doors



| Designation               | Ident-No. | Colour       | Dimensions     | Type of installation       |
|---------------------------|-----------|--------------|----------------|----------------------------|
| AS 500 rocker push button | 120888    | alpine white | 80 x 80 x 9 mm | Flush-mounted installation |

### PULL SWITCH \*

For triggering calls in barrier-free bathrooms or WCs



| Designation | Description                  | Ident-No. | Colour | Dimensions      | Type of installation |
|-------------|------------------------------|-----------|--------|-----------------|----------------------|
| Pull switch | Incl. pull chain 500 mm long | 008607    | red    | 36 x 94 x 34 mm | Surface-mounted      |

### GC 308 \*

Radar movement detector with individual adjustment option for activating automatic doors



| Designation                        | Description                    | Ident-No. | Colour                 | Dimensions       | Output                       |
|------------------------------------|--------------------------------|-----------|------------------------|------------------|------------------------------|
| GC 308 R radar movement detector * | Activation of automatic drives | 203605    | stainless steel colour | 120 x 50 x 50 mm | Potential-free relay contact |
| GC 308 R radar movement detector * | Activation of automatic drives | 203603    | black                  | 120 x 50 x 50 mm | Potential-free relay contact |
| GC 308 R radar movement detector * | Activation of automatic drives | 203604    | white                  | 120 x 50 x 50 mm | Potential-free relay contact |

## DIGITAL PROGRAMMABLE TIMER \*

For time-controlled changes of modes of operation on automatic doors



## REED SWITCH \*

For non-contact monitoring of the door leaf position



| Designation   | Description  | Ident-No. | Colour |
|---------------|--|-----------|--------|
| Reed switch * | For non-contact monitoring of the door leaf position | 092777    | white  |

## E2 ROCKER PUSH BUTTON

Activation of all GEZE automatic doors



| Designation           | Ident-No. | Colour          | Dimensions           | Type of installation       |
|-----------------------|-----------|-----------------|----------------------|----------------------------|
| E2 rocker push button | 094013    | pure white matt | 80.8 x 80.8 x 9.3 mm | Flush-mounted installation |

## LS 990 ROCKER PUSH BUTTON

Activation of all GEZE automatic doors



| Designation               | Ident-No. | Colour          | Dimensions      | Type of installation       |
|---------------------------|-----------|-----------------|-----------------|----------------------------|
| LS 990 rocker push button | 098396    | Stainless steel | 81 x 81 x 11 mm | Flush-mounted installation |

## Ecturn



---

\* The products designated above may vary in form, type, characteristics, function, or availability depending on the country. Please get in touch with your GEZE contact person if you have any questions.