

Product data sheet

E 250 NT



Compact design spindle drive with a wide area of application

AREAS OF APPLICATION

- Smoke and heat extraction system and natural ventilation (24 V) for direct opening in the façade and roof area
- Inward- and outward opening windows with bottom-hung, top-hung and side-hung leaves as well as roof windows
- Can be used in the exhaust air and air inlet system
- E 250 NT for dry rooms only, Variant E 250 NT AB for protected outdoor area (e.g. canopy)
- Installation on wooden, PVC or metal windows



PRODUCT FEATURES

- Continuously adjustable drive stroke and individual speeds for ventilation and smoke and heat extraction
- Synchronisation of max. four drives without external control unit
- Easily change the mode of operation (Solo and Syncro, master/slave) by means of DIP switch
- IQ windowdrive - intelligent drive control
- Tested as a natural smoke and heat exhaust ventilation device (SHEV) in accordance with EN 12101-2

TECHNICAL DATA

Productname	E 250 NT
Dimensions	40 x 47 mm
Opening speed RWA	5.7 mm, stroke 500: 9.5 mm/s
Opening speed ventilation	5 mm/s
Force of pressure (max.)	750 N
Locking force (max.)	2000 N
Compressive force	750 N
Tensile force	750 N
Voltage at operation	24 V ± 25 %
Operating voltage	24 V DC
Current consumption	1.3 A
Current consumption according to area of application	Ventilation (24 V): 0.9 A; RWA (18 V): 1.0 A Stroke 500: Ventilation (24 V): 1.1 A; RWA (18 V): 1.3 A
Power consumption	20 W
Duty rating	30 %
Connector cable length	2 m
Special length of connector cable	5 m, 7.5 m
Min. core cross section	0.75 mm ²
Number of cores	4 cores
Service temperature	-5 - 70 °C
IP rating	IP65
protection rating	III
Syncro function	Yes
Additional locking available	Yes
Type of additional locking mechanism	Locking drive
Type of stroke shortening	Synchronising unit, Factory setting
End position cut-off extended	electronic, via internal path sensor
End position cut-off retracted	electronic, via path and load
Overload cut-off	Yes
Complete opening within 60 s	yes, up to 500 mm stroke
NSHEV tested	Yes
NSHEV additional information	yes, up to 500 mm stroke



Number synchronisation drive units	4
KNX ability	Yes
Bottom-hung window INWARD-opening frame installation	Yes
Bottom-hung window inward opening leaf installation	Yes
Bottom-hung window OUTWARD-opening frame installation	Yes
Side-hung window INWARD-opening frame installation	Yes
Side-hung window INWARD-opening door leaf installation	Yes
Side-hung window OUTWARD-opening frame installation	Yes
Top-hung window INWARD-opening frame installation	Yes
Top-hung window INWARD-opening leaf installation	Yes
Top-hung window OUTWARD-opening frame installation	Yes
OUTWARD-opening roof window	Yes

NETWORKING



VARIANTS / ORDER INFO

Designation	Description	Ident-No.	Colour	Stroke	Dimensions
E 250 NT		146657	according to RAL	200 mm	40 x 47 mm
E 250 NT - special version	Can be configured: Stroke, cable length, colour, variant E 250 NT AB	146676	according to RAL		40 x 47 mm
E 250 NT *		146659	white RAL 9016	230 mm	40 x 47 mm
E 250 NT		146665	white RAL 9016	500 mm	40 x 47 mm
E 250 NT *		146672	according to RAL	750 mm	40 x 47 mm
E 250 NT		146661	EV1	300 mm	40 x 47 mm
E 250 NT *		146674	white RAL 9016	1000 mm	40 x 47 mm
E 250 NT *		146671	white RAL 9016	750 mm	40 x 47 mm
E 250 NT		146670	EV1	750 mm	40 x 47 mm
E 250 NT		146673	EV1	1000 mm	40 x 47 mm
E 250 NT *		146651	according to RAL	100 mm	384 x 40 x 47 mm
E 250 NT *		146662	white RAL 9016	300 mm	40 x 47 mm
E 250 NT		146664	EV1	500 mm	40 x 47 mm
E 250 NT *		146660	according to RAL	230 mm	40 x 47 mm
E 250 NT *		146653	white RAL 9016	150 mm	40 x 47 mm

Designation	Description	Ident-No.	Colour	Stroke	Dimensions
E 250 NT *		146663	according to RAL	300 mm	40 x 47 mm
E 250 NT		146655	EV1	200 mm	40 x 47 mm
E 250 NT *		146500	white RAL 9016	100 mm	384 x 40 x 47 mm
E 250 NT		146658	EV1	230 mm	40 x 47 mm
E 250 NT *		146656	white RAL 9016	200 mm	40 x 47 mm
E 250 NT *		146675	according to RAL	1000 mm	40 x 47 mm
E 250 NT		146652	EV1	150 mm	40 x 47 mm
E 250 NT		146499	EV1	100 mm	384 x 40 x 47 mm
E 250 NT *		146654	according to RAL	150 mm	40 x 47 mm
E 250 NT		146666	according to RAL	500 mm	40 x 47 mm

ACCESSORIES**ADAPTER FOR BRACKET E 250 NT NSK-S**

For installation of the E 250 NT spindle drive on Schüco roof windows



Designation	Description	Ident-No.	Colour
Adapter for bracket E 250 NT NSK-S	suitable for installation on the secondary closing edge of roof windows (Schüco AWS57 RO)	138370	EV1

EYE BOLT E 250 NT DRM *

For assembly of the E 250 NT electric spindle drive



Designation	Description	Ident-No.	Colour
Eye bolt E 250 NT DRM *	suitable for installation on the secondary closing edge of roof windows	138368	silver-coloured

ROTATING BRACKET E 250 NT NSK *

For roof window installation of the E 250 NT spindle drive



Designation	Description	Ident-No.	Colour
Rotating bracket E 250 NT NSK *	with eye bolts and bracket mount; suitable for installation on the secondary closing edge of roof windows	138367	silver-coloured

ROTATING BRACKET E 250 NT

For roof window installation of the E 250 NT spindle drive



Designation	Description	Ident-No.	Colour
Rotating bracket E 250 NT *	With eye bolts and leaf bracket	116114	according to RAL
Rotating bracket E 250 NT	With eye bolts and leaf bracket	116112	EV1
Rotating bracket E 250 NT	With eye bolts and leaf bracket	116113	white RAL 9016

BRACKET INWARD OPENING E 250 NT / E 350 N

For installation of the E 250 NT and E 350 N spindle drives



Designation	Description	Ident-No.	Colour
Bracket INWARD OPENING E 250 NT / E 350 N	With eye bolts and leaf bracket	027223	white RAL 9016
Bracket INWARD OPENING E 250 NT / E 350 N	With eye bolts and leaf bracket	027222	according to RAL
Bracket INWARD OPENING E 250 NT / E 350 N	With eye bolts and leaf bracket	027218	EV1

STANDARD BRACKET E 250 NT / E 350 N

For installation of the E 250 NT and E 350 N spindle drives



Designation	Description	Ident-No.	Colour
Standard bracket E 250 NT / E 350 N	With eye bolts and leaf bracket	020879	white RAL 9016
Standard bracket E 250 NT / E 350 N	With eye bolts and leaf bracket	019032	EV1
Standard bracket E 250 NT / E 350 N	With eye bolts and leaf bracket	020878	according to RAL

BRACKET E 250 NT NSK

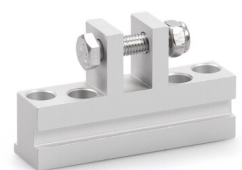
For roof window installation of the E 250 NT spindle drive



Designation	Ident-No.	Colour
Bracket E 250 NT NSK	138369	silver-coloured

LEAF BRACKET E 1500 HSK HE *

For roof window installation of the E 1500 N, E 250 NT and E 350 N spindle drives



Designation	Description	Ident-No.	Colour
Leaf bracket E 1500 HSK HE *	suitable for installation on the main closing edge of roof windows (Heroal 85 D), can also be used for E 250 NT / E 350 N	136190	EV1

LEAF BRACKET E 1500 NSK A-HU *

For roof window installation of the E 1500 N and E 250 NT spindle drives



Designation	Description	Ident-No.	Colour
Leaf bracket E 1500 NSK A-HU *	suitable for installation on the secondary closing edge of roof windows (Alcoa AA 100, Hueck VF 50/60), can also be used for E 250 NT	136189	EV1

LEAF BRACKET E 1500 NSK HE *

For roof window installation of the E 1500 N and E 250 NT spindle drives



Designation	Description	Ident-No.	Colour
Leaf bracket E 1500 NSK HE *	suitable for installation on the secondary closing edge of roof windows (Heroal 85 D), also suitable for E 250 NT	136188	EV1

LEAF BRACKET E 1500 NSK W-HU *

For roof window installation of the E 1500 N and E 250 NT spindle drives



Designation	Description	Ident-No.	Colour
Leaf bracket E 1500 NSK W-HU *	suitable for installation on the secondary closing edge of roof windows (Wicona WT 50/60, Hueck 85 E), can also be used for E 250 NT	136187	EV1

LEAF BRACKET E 1500/ E 3000 NSK AP *

For roof window installation of the E 1500 N, E 1500 S, E 3000 and E 250 NT spindle drives



Designation	Description	Ident-No.	Colour
Leaf bracket E 1500/ E 3000 NSK AP *	suitable for installation on the secondary closing edge of roof windows (Aluprof MB-SR50), can also be used for E 250 NT	140713	EV1

SAFETY SCISSORS NO. 35

For protection of bottom-hung leaves



Designation	Description	Ident-No.	Colour	Leaf weight (max.)
Safety scissors no. 35	Fix pack available from stock (10 pieces), minimum leaf height 300mm	014499	Galvanised	270 kg

SAFETY SCISSORS NO. 60

For protection of bottom-hung leaves



Designation	Description	Ident-No.	Colour	Leaf weight (max.)
Safety scissors no. 60	Fix pack available from stock (10 pieces), minimum leaf height 700mm	133814	Galvanised	240 kg

SERVICE CASE IQ WINDOWDRIVE

For commissioning and parameter setting of the window drives from the IQ windowdrive range



Designation	Description	Ident-No.	Colour	Supply voltage	Output current (max.)
Service case GEZE IQ windowdrive	for commissioning of 24 V window drives and for parameter setting of the IQ windowdrive drives in combination with the ST 220	142586	silver-coloured	100 - 240 V AC	5.5 A

IQ GEAR *

Interface for activation of the Slimchain, Powerchain and E 250 NT window drives in ventilation mode



Designation	Description	Ident-No.	Operating voltage
IQ gear *	Interface for activation of the Slimchain, Powerchain and E 250 NT window drives in ventilation mode	151959	24 V DC

IQ BOX SAFETY *

Safety module for protecting hazardous areas of power-operated windows

**LEAF BRACKET E 1500/ E 3000 NSK S ***

For installation of the E 1500 N, E 1500 S, E 3000 and E 250 NT spindle drives



Designation	Description	Ident-No.	Colour
Leaf bracket E 1500/ E 3000 NSK S *	suitable for installation on the secondary closing edge of roof windows (Schüco AWS57 RO)	136186	EV1

IQ BOX KNX

Interface module for connecting the Slimchain, Powerchain and E 250 NT window drives in the KNX building bus



Designation	Description	Ident-No.	Dimensions	Type of installation	IP rating
IQ box KNX	Top hat rail variant (space requirement 18 mm/1 horizontal pitch). One IQ box KNX is required for each window (also for Syncro applications and with locking drives).	164437	18 x 98 x 62 mm	Surface-mounted, Flush-mounted installation	IP20
IQ box KNX	Flush-mounted variant. One IQ box KNX is required for each window (also for Syncro applications and with locking drives).	164443	50 x 45 x 19 mm	Surface-mounted, Flush-mounted installation	IP20

GEZE POWER SUPPLY NT 1.5A-24V HS *

24 V power supply for top hat rail mounting



Designation	Description	Ident-No.	Colour	Dimensions	Operating voltage
Power supply NT 1.5 A-24 V HS *	Output voltage 24 V DC, W x H x D: 35 x 90 x 58 mm, assembly on top hat rail, 2 horizontal pitches	151425	black	35 x 90 x 58 mm	230 V AC

POWER SUPPLY NT 2.5 A-24 V HS *

24 V power supply for top hat rail mounting



Designation	Description	Ident-No.	Colour	Dimensions	Operating voltage
Power supply NT 2.5 A-24 V HS *	Output voltage 24 V DC, W x H x D: 52 x 90 x 58 mm, assembly on top hat rail, 3 horizontal pitches	151424	black	52 x 90 x 58 mm	230 V

POWER SUPPLY NT 6.25 A-24 V HS *

24 V power supply for top hat rail mounting



Designation	Description	Ident-No.	Colour	Dimensions	Operating voltage
Power supply NT 6.25 A-24 V HS *	Output voltage 24 V DC, W x H x D: 72 x 95 x 66.5 mm, assembly on top hat rail, 4 horizontal pitches	192113	grey	72 x 95 x 66.5 mm	230 V DC +/- 10%

ST 220

Service terminal for the wireless and wired parameter setting of GEZE door and window products



Designation	Description	Ident-No.	Colour	Dimensions	Operating voltage
Service terminal ST 220	For parameter setting and diagnosis for TZ 320, TE 220, automatic door systems, drives from the IQ windowdrive series and THZ N4, THZ Comfort N4, battery operation with 4x AAA cells (not supplied by GEZE), plain text display on illuminated panel, keypad for operation / Parameter changes to GEZE systems may only be carried out by experts who have been authorised by the manufacturer	087261	blue	80 x 125 x 37 mm	24 V

NT 2.5 A-24 V SM DIR POWER SUPPLY *

24 V power supply for surface-mounted installation with integrated direction control/polarity reversal



Designation	Description	Ident-No.	Colour	Dimensions	Operating voltage
NT 2.5 A-24 V SM DIR power supply *	Output voltage 24 V DC, W x H x D: 200 x 50 x 25 mm, surface-mounted, with integrated direction control/polarity reversal	195293	grey	200 x 50 x 25 mm	230 V AC

DRIP LOOP *

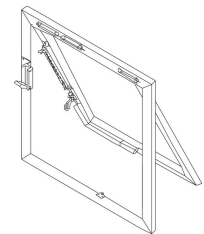
Concealed cable transition for power supply of the window drives



Designation	Description	Ident-No.	Colour	Operating voltage	IP rating
Drip loop 4m/6m *	for power supply to window drives	193863	grey	48 V DC	IP67
Drip loop 2m/3m *	for power supply to window drives	193287	grey	48 V DC	IP67

BRACKETS RWA 1XX

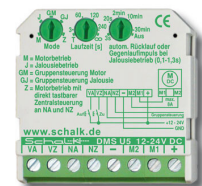
complete set



Designation	Ident-No.	Colour	Stroke
RWA 100 NT accessories *	155224	EV1	
RWA 105 NT accessories *	155227	EV1	
RWA 110 NT accessories *	155230	EV1	
RWA 110 NT accessories *	155352	according to RAL	
RWA 100 NT accessories *	155226	according to RAL	
RWA 105 NT accessories *	155229	according to RAL	

OPEN/CLOSE WINDOW CONTROL *

Open/Close window controller for simple ventilation control



Designation	Description	Ident-No.	Dimensions	Operating voltage	Type of installation
OPEN/CLOSE window control unit 24 V - HS *	Control unit (individual, group, central, time) for 24 V window drives for installation on a top hat rail. Output current max. 8 A	163812	18 x 88 x 58 mm	24 V	Top hat rail mounting
OPEN/CLOSE window control unit 24 V - UP *	Control unit (individual, group, central, time) for 24 V window drives for installation in a flush-mounted box. Output current max. 8 A	163813	43 x 43 x 18.5 mm	24 V	Flush-mounted installation
OPEN/CLOSE window control unit 230 V - HS *	Control unit (individual, group, central, time) for 230 V window drives for installation on a top hat rail. Output current max. 10 A	163814	18 x 88 x 58 mm	230 V	Top hat rail mounting

Designation	Description	Ident-No.	Dimensions	Operating voltage	Type of installation
OPEN/CLOSE window control unit 230 V - UP *	Control unit (individual, group, central, time) for 230 V window drives for installation in a flush-mounted box. Output current max. 10 A	163815	43 x 43 x 18.5 mm	230 V	
OPEN/CLOSE universal window control 230 V AC - TOP HAT RAIL *	Control (individual, group, central, time) with potential-free inputs for 230 V window drives for installation on a top hat rail. Output current max. 10 A	163816	18 x 88 x 58 mm	230 V	Top hat rail mounting

WRM-24

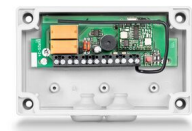
Receiving module for activating automatic doors and window drives with 24 V DC



Designation	Description	Ident-No.	Colour	Dimensions	Output
WRM-24 receiving module	52 x 47 x 23 mm (W x H x D), for installation in a standard flush-mounted socket / 24 V DC operating voltage, pulsed operation or pulsed and continuous operation	131213	black	52 x 52 x 47 x 23 mm	2 potential-free relay contacts

WRM-24B

Receiving module for activating automatic doors and window drives with 24 V DC



Designation	Description	Ident-No.	Colour	Dimensions	Output
WRM-24B receiving module	130 x 80 x 35 mm (W x H x D), for surface mounting with protection class IP54 / 24 V DC operating voltage, pulsed operation or pulsed and continuous operation	131214	white	130 x 130 x 80 x 35 mm	2 potential-free relay contacts

WTH

Remote control for activating GEZE automatic doors and window drives via the GEZE wireless programme



Designation	Description	Ident-No.	Dimensions	Operating voltage	Type of installation
WTH-2 remote control 2 channel	with wall fixing and IP rating IP54	131210	78 x 51 x 15 mm	12 V DC	Wall
WTH-4 remote control 4 channel	with wall fixing and IP rating IP54	131211	78 x 51 x 15 mm	12 V DC	Wall
WTH-1 remote control 1 channel	with wall fixing and IP rating IP54	131209	78 x 51 x 15 mm	12 V DC	Wall

WTM

Transmitting module for activating GEZE automatic doors and window drives via the GEZE wireless programme



Designation	Description	Ident-No.	Dimensions	Operating voltage	Type of installation
WTM transmitting module	44 x 30 x 11 mm (W x H x D), for optional integration in push button	131212	44 x 30 x 11 mm	3 V DC	Integrated

SURFACE-MOUNTED HOUSING *

Housing for surface mounting of top hat rail components such as power supply units or control units



Designation	Description	Ident-No.	Colour	Dimensions	IP rating
Surface-mounted housing *	Size: W x H x D = 193 x 130 x 82 mm. For electronic top hat rail components, e.g. power supply units	152010	white	193 x 130 x 82 mm	IP40

POWER LOCK

Locking drive in combination with Slimchain, Powerchain or E 250 NT



Designation	Description	Ident-No.	Colour	Stroke	Dimensions
Power lock *	max. locking stroke 24 mm	147021	white RAL 9016		34 x 36 mm
Power lock - special version *	Can be configured: Cable length, colour	147022	according to RAL	22 mm	34 x 36 mm
Power lock	max. locking stroke 24 mm	147020	EV1		34 x 36 mm

* The products designated above may vary in form, type, characteristics, function, or availability depending on the country. Please get in touch with your GEZE contact person if you have any questions.