

Product data sheet

Boxer EFS 4-6



Integrated door closer for 1-leaf doors with a leaf width of up to 1400 mm with electric free swing

AREAS OF APPLICATION

- Fire and smoke protection doors, proof of suitability for the door required
- Right and left single-action doors
- Single-action doors up to 1400 mm leaf width and 180 kg leaf weight
- Integrated installation
- Hold-open systems with integrated hold-open function with free swing
- Barrier-free access in accordance with DIN 18040

PRODUCT FEATURES

- Closing force with variable adjustment of EN 4-6
- Can be used for right and left hand doors without conversion
- Door closer is embedded in the door leaf and frame and fulfils the highest design demands
- Closing sequence control holds the active leaf in the waiting position until the passive leaf is closed
- Free swing function makes it possible to pass through the door with little physical force required
- Comfort hold-open function locks the door at the end of the free swing area
- Smoke switch control unit can be connected, whose signal makes the door close automatically in the event of a fire
- Integrated back check, slows down doors that are thrown open forcefully
- Hydraulic latching action which accelerates the door shortly before it is closed
- Closing speed can be individually adjusted
- All functions can be adjusted in the installed state

TECHNICAL DATA

Productname	Boxer EFS 4-6
Closing force in accordance with EN 1154	EN 4 - 6
Barrier-free in accordance with DIN 18040 up to leaf width (max.) in mm	1400 mm
Leaf width (max.)	1400 mm
Leaf weight (max.)	180 kg
Type of installation	Concealed
Opening angle (max.)	120 °
Input voltage	24 V DC
Suitability for fire protection doors	Yes
Closing force adjustable	Yes, stepless
Adjustable closing speed	Yes
Latching action adjustable	Yes, via valve
Back check integrated	Mechanically in the guide rail
Position of closing force adjustment	Top
Hold-open function	Electrically, for free swing function
Smoke switch integrated	No

Boxer EFS 4-6



PART

CLOSER BODY BOXER EFS 4-6

Main body for integrated door closer size EN 4-6 with electric free swing function incl. free swing lever with comfort hold-open function



Designation	Description	Ident-No.	Closing force in accordance with EN 1154	Dimensions	Colour
Boxer EFS 4-6	Closer size EN 4-6, with electric free swing function incl. free swing lever with comfort hold-open function, leaf width up to 1400 mm, door leaf thickness min. 50 mm	153559	EN 4 - 6	332 x 40 x 54 mm	silver-coloured

GUIDE RAIL BOXER EFS 20.7 MM *

With an overall height of 20.7 mm for Boxer EFS 4-6



Designation	Description	Ident-No.	Dimensions	Colour	Hold-open function
Guide rail Boxer EFS 20.7 mm *	Overall height 20.7 mm, for Boxer EFS 4-6	153571	480 x 31 x 20.7 mm	silver-coloured	Electrically, for free swing function

GUIDE RAIL BOXER EFS 12 MM *

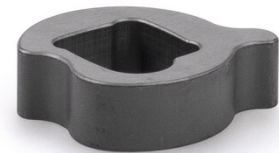
With an overall height of 12 mm for Boxer EFS 4-6



Designation	Description	Ident-No.	Dimensions	Colour	Hold-open function
Guide rail Boxer EFS 12 mm	Overall height 12 mm, for Boxer EFS 4-6	153560	480 x 20 x 12 mm	silver-coloured	Electrically, for free swing function

ACCESSORIES**SPINDLE EXTENSION BOXER EFS 4-6 ***

For comfort hold-open lever



Designation	Description	Ident-No.	Spindle extension
Spindle extension Boxer EFS 4-6 *	For comfort hold-open lever	153574	8 mm
Spindle extension Boxer EFS 4-6 *	For comfort hold-open lever	153573	4 mm

GC 152 *

Smoke detector for GEZE hold-open systems



Designation	Description	Ident-No.	Colour	Supply voltage	Type of installation
GEZE smoke detector GC 152 *	Complete with base, 24 V DC, 20 mA, tested in accordance with EN 54-7, with general approval for use with all GEZE hold-open systems FA GC 150, integrated line monitoring, conform with DIN EN 14637	139850	white RAL 9010	24 V DC	Ceiling

GC 153 *

Thermal detector for GEZE hold-open systems



Designation	Description	Ident-No.	Colour	Supply voltage	Type of installation
GEZE thermal detector GC 153 *	Complete with base, 24 V DC, 20 mA, tested in accordance with EN 54-5, with general approval for use with all GEZE hold-open systems FA GC 150, integrated line monitoring, conform with DIN EN 14637	139881	white	24 V DC	Ceiling

AS 500

Manual trigger switch for the manual release of electrically controlled hold-open devices



Designation	Description	Ident-No.	Colour	Dimensions	Operating voltage
AS 500 manual trigger switch	for the manual release of electrically controlled hold-open devices including terminating resistor for line monitoring	116266	alpine white/red	80 x 80 x 9 mm	24 V DC
AS 500 manual trigger switch, glass	for the manual release of electrically controlled hold-open devices including terminating resistor for line monitoring, glass pane and 5 interchangeable labels	120880	alpine white/red	80 x 80 x 21 mm	24 V DC

RSZ 7 *

Extendable smoke switch control unit for all GEZE hold-open devices



Designation	Description	Ident-No.	Colour	Supply voltage	Dimensions
RSZ 7 smoke switch control unit *	Smoke switch control unit for all GEZE hold-open devices	185231	according to RAL	230 V	346 x 30 x 55 mm
RSZ 7 smoke switch control unit *	Smoke switch control unit for all GEZE hold-open devices	184196	Stainless steel optic	230 V	346 x 30 x 55 mm
RSZ 7 smoke switch control unit *	Smoke switch control unit for all GEZE hold-open devices	181025	silver-coloured	230 V	346 x 30 x 55 mm
RSZ 7 smoke switch control unit *	Smoke switch control unit for all GEZE hold-open devices	184195	white RAL 9016	230 V	346 x 30 x 55 mm

* The products designated above may vary in form, type, characteristics, function, or availability depending on the country. Please get in touch with your GEZE contact person if you have any questions.